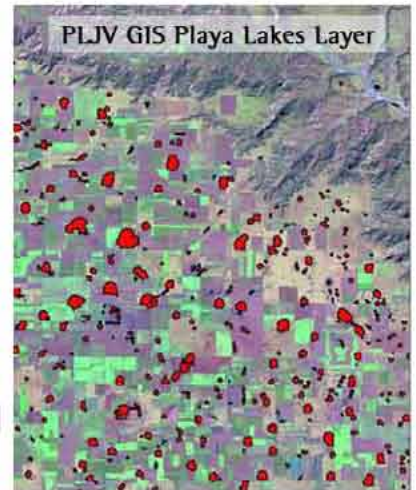


Recent PLJV Projects in Kansas

PLJV Geographic Information System

The PLJV has recently developed a Geographic Information System (GIS) containing landcover data for the entire six-state playa lakes region. PLJV partners are able to use the GIS to locate and quantify acreage of playa lakes, grassland, cropland and other habitats important to birds, and evaluate the landscape factors that affect the quality of these habitats. With the GIS, the PLJV can prioritize areas of special significance to the Joint Venture's conservation mission and track projects on a spatially-explicit level.



Conservation Reserve Program/CP23a



PLJV's Kansas partners played a major role in the creation of the Wetlands Restoration Non Floodplain Initiative, or CP23a, a continuous CRP practice aimed at protecting playa lakes. To date, Kansas partners have held seven landowner workshops to promote the practice, and are launching a CP23a signup incentive program.

Local Conservation Partnerships

The PLJV facilitates the development of grass roots conservation partnerships in each member state, such as the Kansas Alliance for Wetlands and Streams (KAWS). KAWS is made up of local personnel from state natural resource agencies, community leaders and landowners. In 2004, KAWS conserved more than 1,700 acres of streams and wetlands.



Playa Lakes Educational Exhibit



Playas... Gems of the Plains is an award-winning, traveling exhibit funded by the PLJV that explores the natural and cultural history of playa lakes in the Southern Great Plains. Since 2003, the exhibit has been touring museums and other venues across the PLJV region, and will be visiting Garden City, Colby and Hays November 2005 - May 2006.