

7

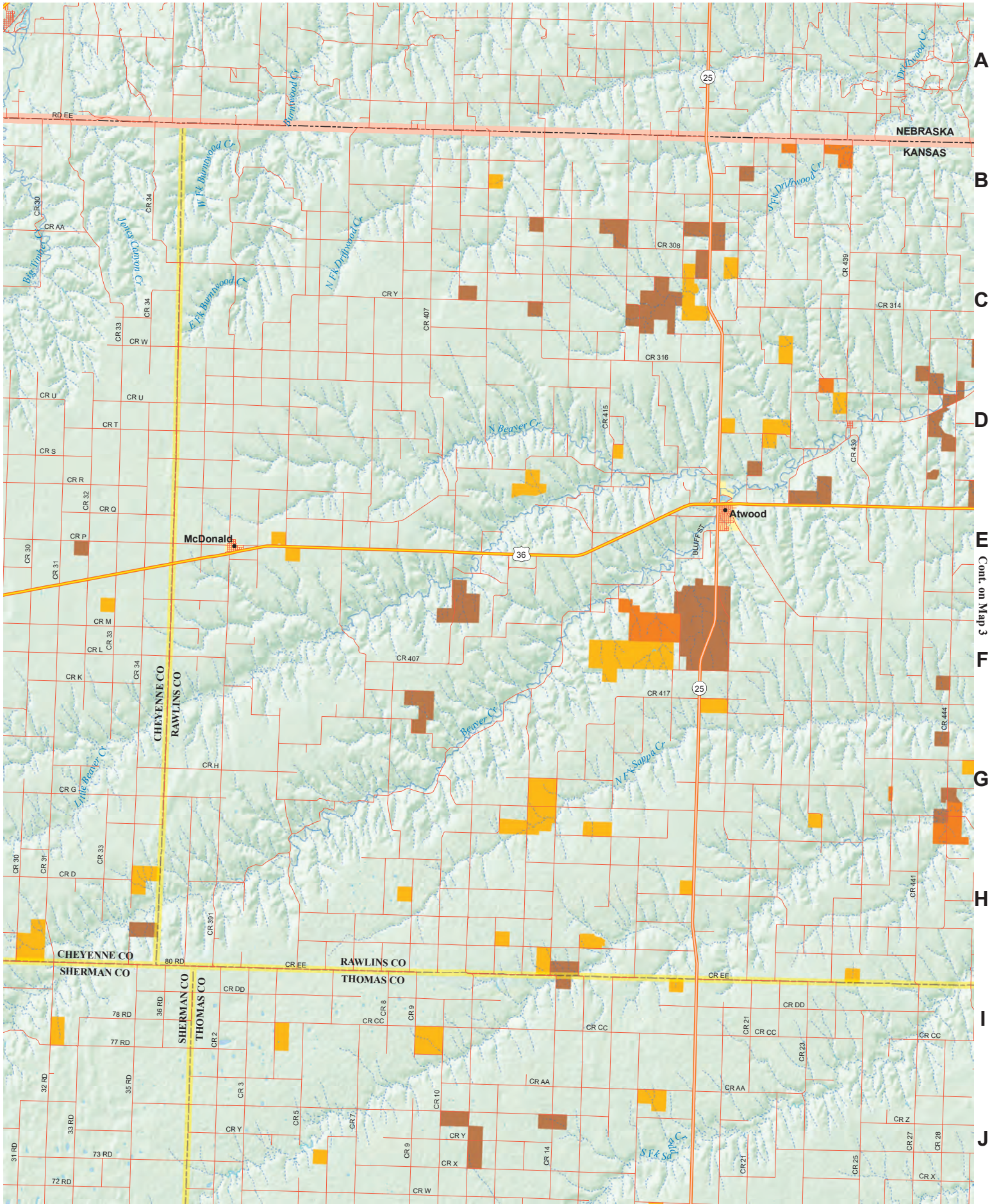
8

9

10

11

12



A

B

C

D

E

F

G

H

I

J

NEBRASKA
KANSAS

McDonald

Atwood

BLUFF

CHEYENNE CO
RAWLINS CO

CHEYENNE CO
SHERMAN CO

SHERMAN CO
THOMAS CO

RAWLINS CO
THOMAS CO

Cont. on Map 14