

# Kansas Fishing Atlas

*2022 Public Fishing Access*



Includes  
*Walk-in Fishing Access (WIFA)*



Get our mobile app  
**HuntFish KS**



# WIFA Area Rules

Walk-in Fishing Access (WIFA), formerly F.I.S.H., sites are leased from private landowners and are typically open to public fishing from March 1 – Oct. 31, though some properties are open year-round. The WIFA program provides anglers increased opportunities to enjoy fishing on the state's streams and small impoundments, all that is required is a state fishing license. Funding for the program is provided through fishing license revenues and Sport Fish Restoration Funds. Please observe all rules and regulations, and remember that common sense and ethical behavior will influence the future of the program.

## The following guidelines help maintain a good relationship between landowners and anglers:

1. Look for the WIFA signs (pictured below) before entering the property. Sites may have been withdrawn from the program. If you do not see signs, do not enter.
2. Obey lease boundaries. Stay within 50 feet of the stream or impoundment shoreline. If the WIFA property is a stream, fish only on the side of the stream that is posted as an access site. Do not walk or fish on adjacent property.
3. Respect the rights of landowners, as well as others using the area. Treat the land as if it were your own.
4. Take all trash with you when you leave. If someone before you has irresponsibly left trash, please take a moment and pick it up, too.
5. Do not open gates or enter properties with vehicles unless authorized. Park along the road or in designated parking areas. Leave field-access, drives, and rural roads open so that landowners moving large implements may pass.

6. Avoid stretching fences when crossing them, and use fence stiles where available.

7. Do not attempt to contact cooperating landowners to ask about fishing other portions of their land.

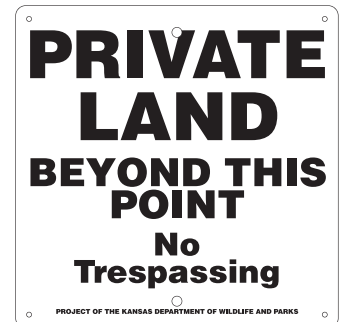
## Regulations governing WIFA area use:

- Impounded WIFA waters have a **creel limit of two channel catfish, a creel limit of two largemouth bass, and an 18-inch minimum length limit on largemouth bass**. Otherwise, all Kansas fishing regulations and statewide creel limits apply. It's especially important for anglers using the sites to respect and follow the rules that apply on WIFA properties. You do not need to contact the landowner for permission on WIFA waters.

- Seining is prohibited on all WIFA waters, and trotlines and setlines are prohibited on impoundments under 1,201 acres in size (KAR 115-8-6); No swimming (KAR 115-8-8); Camping by posted notice only (KAR 115-8-9); No pets, except on a leash (KAR 115-8-10); No horseback riding (KAR 115-8-11); No stocking or release of wildlife, including the dumping of live bait (KAR 115-8-12); Vehicles shall be operated only as authorized (KAR 115-8-13); No fireworks (KAR 115-8-14); No unauthorized fires (115-8-15); The discharge of firearms is prohibited (KAR 115-8-5); No littering (KAR 115-8-18); No cereal malt beverages or alcoholic liquor (KAR 115-8-19); Destructive acts such as digging or destroying signs or vegetation is prohibited (KAR 115-8-20).

- All Kansas boating laws are in effect on WIFA waters.

Due to unforeseen conditions and/or renovations, some properties may be dry, lower than normal or flooded. Water quality and vegetation may vary among properties.



Look for these signs before accessing a WIFA area.

# Using the Fishing Atlas

The maps in this atlas show a variety of public fishing areas, as well as public lands across Kansas. WIFA areas are privately-owned ponds or streams the Kansas Department of Wildlife and Parks (KDWP) has leased and opened to public fishing. Each map also shows all federal reservoirs, state fishing lakes, river access sites, and community lakes. To find fishing areas near you, consult the legend below and then locate the corresponding access locations indicated on the maps.

The maps on the following page show which counties have federal, state, or community fishing opportunities, as well as those with WIFA sites.

Community lakes are impoundments

owned by a city or county government. Community lakes that are managed for public fishing through the department's Community Fisheries Assistance Program (CFAP) and state fishing lakes are labeled with the impoundment name and marked by the blue fish symbol. There are no additional fees to fish at state fishing lakes or community lakes in the CFAP program. Community lakes not in the CFAP program are also labeled with the impoundment name and are marked by a red octagon symbol as local governments managing these lakes may require a permit and/or additional fees for fishing access.

Most WIFA areas are open to fishing from March 1 to Oct. 31, but some are

open year-round, see legend. Accessing the WIFA properties prior to or after the indicated access period is prohibited.

Maps are at a scale of 1:277,500 (1 inch represents 4.38 miles) and were compiled according to conventional cartographic standards using the most reliable information available. KDWP does not guarantee freedom from errors or inaccuracies and disclaims any legal responsibility or liability for interpretations made from these maps, or decisions based thereon.

This atlas is a continual work in progress and any comments, suggestions, or corrections are welcomed. Any such comments may be submitted to [kdwp.kdwptinfo@ks.gov](mailto:kdwp.kdwptinfo@ks.gov).

## FISHING ATLAS LEGEND

**Interstate Route**



**State Boundary**



**Reservoirs, State Fishing Lakes  
Community Lakes**  
(No Additional Fees Required)



**US Route**



**County Boundary**



**River/Stream  
Access Points**



**State Route**



**Federal or State Land**



**Community Lakes**  
(Local Permit Required)



**Street or Road**



**Military Reservation**



**Urban Area**



**WIFA Tracts**



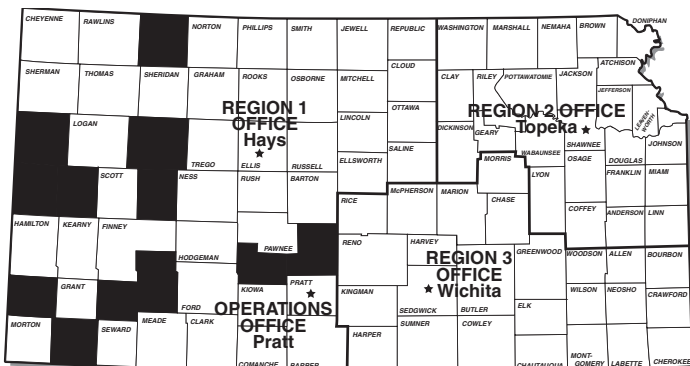
### WIFA Tract Labeling

**Access Period**  
MO = March 1-Oct. 31  
JD = Jan. 1-Dec. 31

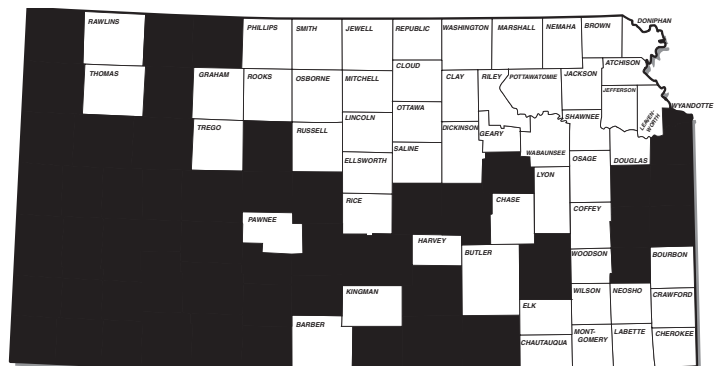
**Size/Length**  
# Total Acres(ac)  
# Total Miles(mi)

**Boating Restrictions**  
A = All Boats Allowed  
C = Carry-In Boats Only  
P = Paddlesports Allowed  
NB = No Boats Allowed

## Counties With Public Fishing Opportunities



## Counties with WIFA Areas



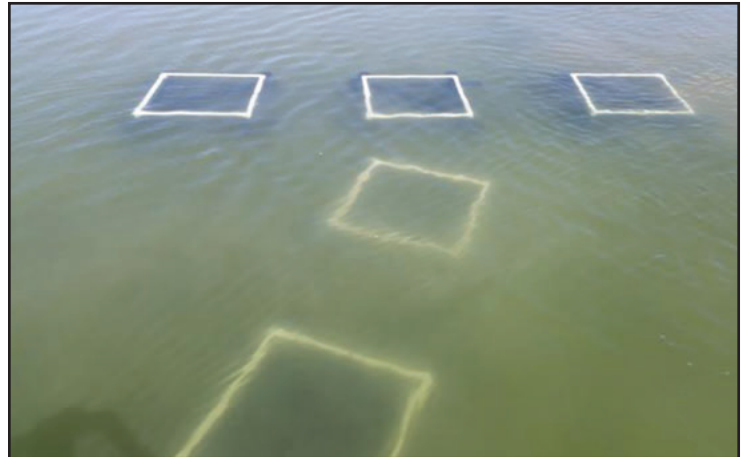


# Fishing Reports and Newsletters

## Fishing Reports

Fishing reports are available on [ksoutdoors.com](http://ksoutdoors.com) and provide information regarding seasonal fishing trends on your favorite lakes and reservoirs. On [ksoutdoors.com](http://ksoutdoors.com), anglers can also access Google Earth files showing the locations of fish attractors, like the “Fish Cubes” shown here at Wilson Reservoir.

View at:  
[ksoutdoors.com/Fishing/Fishing-Reports](http://ksoutdoors.com/Fishing/Fishing-Reports)



## District Fisheries Newsletters

Get the inside scoop on sampling efforts, lake management and updates about your favorite fishing hole by reading newsletters from district fisheries biologists. You can even sign-up to receive area-specific newsletters via email. Use the link below to navigate to the “Newsletter Sign-up Forms.”

Sign up at:  
[ksoutdoors.com/KDWP-Info/News](http://ksoutdoors.com/KDWP-Info/News)

## Fishing Forecast

The *2022 Kansas Fishing Forecast* highlights Kansas’ top fishing spots. Download an electronic copy from [ksoutdoors.com](http://ksoutdoors.com), or grab a printed copy from most license vendors. Anglers can also view the forecast in the 2022 March/April issue of *Kansas Wildlife & Parks Magazine*, which can be purchased by calling (620) 672-0756.

Download at:  
[ksoutdoors.com/Fishing/Fishing-Forecast](http://ksoutdoors.com/Fishing/Fishing-Forecast)

The forecast is produced using data collected by fisheries biologists during their annual lake monitoring activities (which include netting and electrofishing). Not every lake is sampled each year. Waters with low densities of certain species may not be listed.

Data is separated into three categories - reservoirs (those larger than 1,200 acres), lakes (waters from 10 to 1,200 acres), and ponds (waters smaller than 10 acres) - because sampling on small water bodies may not be comparable with that on larger waters.

Tables have been created for popular species and include a **Density Rating**, **Preferred Rating**, **Lunker Rating**, **Biggest Fish**, **Biologist's Rating**, and **3-Year Average**.

The **Density Rating** is the number of fish that were high-quality size or larger sampled per unit of sampling effort. The number listed in parentheses at the top of the **Density Rating** column is the length of fish considered acceptable to most anglers and is different for each species. The higher the **Density Rating**, the more high-quality-sized or larger fish per surface acre in the lake. Theoretically, a lake with a **Density Rating** of 30 has twice as many high-quality-sized fish per acre as a lake with a **Density Rating** of 15.

The **Preferred Rating** identifies how many above-average-sized fish a water contains. For example, a lake may have a good density of crappie, but few fish over 10 inches. The **Preferred Rating** tells you which lake to go to for a chance to catch larger fish.

The **Lunker Rating** is similar to the **Density Rating**, but it tells you the relative density of lunker-sized fish in the lake. A lunker is a certain length of fish considered a trophy by most anglers. It also differs with each species and that length is listed in parentheses at the top of the **Lunker Rating** column. For example, most anglers consider a channel catfish longer than 28 inches a lunker. Many lakes may have a **Lunker Rating** of 0, but this does not mean there are no big fish in that lake. It just means that no lunker fish were caught during sampling, and they may be less abundant than in lakes with positive **Lunker Ratings**.

You can use the **Density Rating** and **Lunker Rating** together. If you want numbers, go with the highest **Density Rating**. If you want only big fish, go with the **Lunker Rating**. However, a lake with a good **Preferred Rating** might be a better choice.

The **Biggest Fish** column lists the weight of the largest fish caught during sampling.

The **Biologist's Rating** adds a human touch to the forecast and allows each biologist to consider environmental conditions that may have affected the sampling. They also consider previous years' data. A rating of P (poor), F (fair), G (good), or E (excellent) will be in the last column. Sometimes the **Density Rating** may not agree with the **Biologist's Rating** and mean the **Biologist's Rating** may not accurately reflect the biologist's opinion of the fishery.

The **3-Year Average** rating refers to the averaging of the **Density Rating** over the previous three years of sampling to help show a trend for a particular lake.

This brochure is designed to help improve your fishing success. Your ability to catch fish depends on many factors such as water temperature, water clarity, weather, angling skills, fishing pressure, and density of fish in the lake (i.e., number of fish). You may not have much control over many of these factors, but you can use these tables to select a high-density population of your favorite species.

Be sure to keep a copy of the current fishing regulations summary in your tackle box. The pamphlet includes a listing of laws and regulations, information about aquatic nuisance species prevention and distribution, as well as all the length and creel limits for reservoirs and state and community lakes. The pamphlet also has an application for a Master Angler Award, as well as a list of state records.

Purchase your fishing license with the all-new HuntFish KS mobile app. Available in the Apple App and Google Play stores.

**Kansas**  
Department of Wildlife and Parks

Visit [ksoutdoors.com](http://ksoutdoors.com) for a complete list of all sampling results.

# Become a Certified Angler Instructor



If you have a passion for the outdoors and enjoy sharing your knowledge with others, this program is for you. The Angler Education Program is designed to recruit individuals who have a passion for fishing and want to share it with others. The Kansas Department of Wildlife and Parks (KDWP) has partnered with Fishing's Future, a not-for-profit group with a mission to reconnect kids with nature, strengthen family bonds, and instill a responsibility for stewardship of our natural resources.

Similar to KDWP's Hunter Education Program, Angler Education will certify volunteer instructors to teach everything from class design and working with children, to environmental stewardship, knot tying, fish identification, and casting.

Certified instructors may work alone or with other instructors to teach general fishing information, specific fishing techniques, or just take families fishing.

Visit [fishingsfuture.org](http://fishingsfuture.org) for details.





# Reservoirs, State Fishing Lakes & Other Waters

## REGION 1 (WEST)

Barber SFL (55 F10), 77 acres, Upper End Periodically Dry  
Cedar Bluff Reservoir (28 B11), 6,869 acres, **ANS Alert**  
Clark SFL (52 D11), 300 acres  
Concannon SFL (39 C3), 50 acres  
Ford SFL (40 G9), 45 acres  
Glen Elder Reservoir (6 J12), 12,586 acres, **ANS Alert**  
Goodman SFL (28 H10), 40 acres, Periodically Dry  
Hodgeman SFL & WA (40 C10), 87 acres, Periodically Dry  
Jewell SFL (7 G1), 57 acres  
Kanopolis Reservoir (31 D3), 3,550 acres, **ANS Alert**  
Keith Sebelius (Norton) Reservoir (4 E9), 2,300 acres  
Kiowa SFL (41 J3; 53 A3), 21 acres  
Kirwin Reservoir (5 H4), 5,000 acres  
Logan SFL (14 I9), 60 acres, Periodically Dry  
Lovewell Reservoir (7 D2), 2,986 acres  
Meade SFL (51 H4), 80 acres  
Ottawa SFL (20 F7), 138 acres,  
Pratt - Centennial Pond / Kid's Fishing Pond (42 J9), 4 acres  
Rooks SFL (17 B3), 67 acres, Periodically Dry  
Saline SFL (19 J6), 38 acres, Periodically Dry  
Sandsage Bison Reserve Pond (38 E12), 5 acres, Periodically Dry  
Scott SFL (26 C12), 115 acres  
Sheridan SFL (15 B6), 67 acres  
St. Francis Sand Pits, 5 acres  
Webster Reservoir (17 B1), 3,780 acres  
Wilson Reservoir (18 I10), 9,040 acres, **ANS Alert**

## REGION 2 (NORTHEAST)

Atchison SFL (11 G5), 66 acres  
Brown SFL (11 D3), 62 acres  
Browning Oxbow (12 D8), 100 acres, **ANS Alert**  
Clinton Reservoir (23 I4), 7,000 acres, **ANS Alert**  
Clinton State Park - Lake Henry & Picnic Pnds (23 H4), 3.5 acres  
Douglas SFL (23 J6), 180 acres  
Fort Leavenworth - Merritt Lake (24 B8), 5 acres  
Fort Leavenworth - Smith Lake (24 B8), 5 acres  
Geary SFL (21 I2), 97 acres **ANS Alert**  
Hillsdale Reservoir (36 B8), 4,580 acres, **ANS Alert**  
Jeffery EC Lakes (22 C9), 125/450 acres, **ANS Alert**, Limited Access  
John Redmond Reservoir (34 J12), 9,400 acres, **ANS Alert**  
La Cygne Reservoir (36 G11), 2,600 acres  
Leavenworth SFL (23 E6), 160 acres  
Lyon SFL (34 E10), 135 acres, **ANS Alert**  
Marais des Cygnes Wildlife Area (36 I10), 1,967 acres  
Melvern Reservoir (34 F12; 35 E1), 7,000 acres, **ANS Alert**  
Melvern River Pond (35 E1), 90 acres, **ANS Alert**  
Miami SFL (36 F10), 101 acres  
Middle Creek SFL (36 E11), 280 acres  
Milford Reservoir (21 E1), 16,020 acres, **ANS Alert**  
Milford Hatchery Supply Pond (21 G1), 100 acres  
Milford State Park Pond (21 F1), 2 acres

Nebo SFL (11 J1), 38 acres  
Nemaha SFL (10 E9), 18 acres  
Osage SFL (35 A1), 140 acres **ANS Alert**  
Perry Reservoir (23 E3), 11,600 acres, **ANS Alert**  
Pomona Reservoir (35 C2), 4,000 acres, **ANS Alert**  
Pottawatomie SFL #1 (9 J6), 24 acres  
Pottawatomie SFL #2 (21 D5), 75 acres  
Shawnee SFL (22 D12), 135 acres  
Tuttle Creek Reservoir (21 C4), 15,800 acres **ANS Alert**  
Washington SFL (8 C11), 65 acres

## REGION 3 (SOUTHEAST)

Big Hill Reservoir (59 E4), 1,240 acres  
Big Hill WA North Lake (59 E4), 14 acres  
Big Hill WA South Lake (59 E4), 5 acres  
Black Kettle SFL (32 J8), 8 acres  
Bourbon SFL (48 F7), 103 acres  
Butler SFL (57 A4), 124 acres  
Chase SFL (33 H4), 109 acres, **ANS Alert**  
Cheney Reservoir (43 H5), 9,550 acres, **ANS Alert**  
Council Grove Reservoir (33 C5), 3,280 acres, **ANS Alert**  
Cowley SFL (57 I3), 84 acres  
Crawford SFL (48 I10), 150 acres  
El Dorado Reservoir (45 F3), 8,000 acres, **ANS Alert**  
Elk City Reservoir (59 F1), 4,450 acres  
Fall River Reservoir (46 I10), 2,500 acres  
Kingman SFL (43 J1), 144 acres  
Marion Reservoir (32 H12), 6,160 acres, **ANS Alert**  
McPherson SFL (32 F8), 46 acres  
Mined Land Wildlife Area (60 E9), 1,500 acres, Multiple Locations  
Montgomery SFL (59 G1), 105 acres  
Neosho SFL (59 C6), 92 acres  
Neosho Wildlife Area (60 A7), 800 acres  
Riverton - Empire Lake (60 H11), 800 acres  
Toronto Reservoir (46 G11), 2,800 acres  
Wilson SFL (47 H1), 110 acres  
Woodson SFL (46 G12), 180 acres

**Aquatic Nuisance Species (ANS) ALERTS:** Aquatic nuisance species (ANS) pose a threat to native aquatic wildlife and plants. ANS species include the zebra mussel, New Zealand mud snail, Asian carp, white perch, purple loostripe, saltcedar, fertile grass carp, and Eurasian watermilfoil. The areas listed above may have a red "ANS Alert" if ANS have been found there. Please consult a current Kansas Fishing Regulations Summary for more information about ANS and how to prevent their spread.

## COMMUNITY FISHERIES ASSISTANCE PROGRAM

The Kansas Department of Wildlife and Parks (KDWP) has continued the Community Fisheries Assistance Program (CFAP) for 2022. CFAP leases the fishing rights of approximately 13,000 acres of community lakes statewide.

Community cooperators will not charge anglers additional fees to fish from the shore or from a boat, even if permits have been required in the past. State fishing license requirements still apply, and activities other than fishing at these lakes may require additional permits. KDWP hopes removing cost barriers will allow more anglers to enjoy these fishing opportunities more often. When you see the CFAP logo at your local community lake, take a friend, head on in, and wet your lines!



**Family Friendly Facility (FFF):** While all Community Fisheries Assistance Program (CFAP) lakes are great places to go fishing, some offer extra amenities to support family fishing trips. At these locations, no alcohol is allowed, there are flush toilets, security patrols are conducted regularly, security lighting is in place, and there are easily accessible fishing spots. Any CFAP lake that provides these amenities is termed a "Family Friendly Facility" (FFF) and is indicated as such in the list of CFAP lakes.

## NO ADDITIONAL FISHING FEES are charged at the following community lakes:

### REGION 1 (WEST)

Agra City Lake (5 E5), 7 acres, **FFF**  
Atwood Lake (2 E11), 31 acres  
Belleville - Rocky Pond (8 D7), 27 acres, **FFF**, Periodically Dry  
Beymer Sand Pits (38 E9), 18 acres  
Cimarron Grasslands Fishing Pits (49 H3), 15 acres  
Colby - Villa High Lake (14 B11), 2 acres  
Coldwater City Lake (53 F2), 250 acres  
Dodge City - Lake Charles (40 H8), 1 acre  
Dodge City - Mariah Hills Pond (40 H8), 2 acres  
Dodge City - High School Demon Lake (40 H8), 1.5 acres  
Ellis City Lake (17 I1), 30 acres, **FFF**  
Finney Co. - Wildwood Park (38 E12) 2 ponds, 10 acres each  
Graham Co. - Antelope Lake (16 B8), 80 acres  
Great Bend - Stone Park Lake (30 I8), 50 acres  
Great Bend - Vets Park Lake (30 H8), 13 acres, **FFF**  
Hays - Vineyard Park Pond (17 J3), 0.5 acres  
Horse Thief Reservoir (40 C8), 450 acres  
Inman - County Park Pond (31 J5), 1 acre  
Jetmore City Lake (40 C9), 106 acres, Periodically Dry  
Jewell - Emerson Lake (7 G1), 10 acres  
La Crosse - Warren Stone Lake (29 E3), 30 acres, Periodically Dry  
Larned City Pond (41 A5), 2 acres  
Lenora City Lake (59 C1), 38 acres, Periodically Dry  
Liberal - Arkalon Recreation Area (51 H1), 5 acres  
Lincoln Co. - McReynolds Park (19 H2), River Access  
Logan City Lake (4 H12), 25 acres  
Moundridge Park Pond (44 A8), 2 acres  
Plainville Township Lake (17 D3), 144 acres  
Pratt County Lake (42 J9), 51 acres  
Salina - Indian Rock Pond (32 A7), 2 acres, Periodically Dry  
Salina - Lakewood Lake (20 J7), 6 acres, **FFF**  
Sherman - Smoky Gardens (13 D4), 11 acres, Periodically Dry  
St. Francis - Keller Lake (1 E3), 3 acres  
Syracuse - Sam's Pond (37 D3), 50 acres  
Ulysses City Lake (50, A8)

### REGION 2 (NORTHEAST)

Alma City Lake (22 H8), 80 acres  
Atchison City Lake 23 - Warnock Lake (11 I5), 39 acres, **FFF**  
Atchison City Lakes 1-4, 6-9, 24 (11 H5), 51 acres  
Atchison Co. Lake (11 G2), 60 acres  
Baldwin - Spring Creek Lake (35 A6), 7 acres  
Blue Mound City Lake (48 A7), 19 acres  
Bonner Springs - North Park Lake (24 F8; B1 G4), 3 acres  
Carbondale - East Lake (23 J1), 265 acres  
Centralia City Lake (10 F8), 400 acres  
Coffey Co. Lake (35 J1), 5,090 acres, **ANS Alert**  
Douglas Co. - Lone Star Lake (23 J3), 195 acres  
Doniphan County - Troy 4-H Lake (11 E6), 5 acres  
Edgerton - Bridgewater Lake (36 A7), 2.5 acres  
Edgerton City Lake (36 A7), 5.2 acres  
Emporia - Jones Park Ponds (34 G8), 3 acres  
Emporia - Peter Pan Park Ponds (34 G8), 3 acres  
Fort Riley Ponds (21 G2)  
Gardner City Lake (24 I8; B3 I3), 100 acres  
Garnett - Cedar Valley Res. (35 I4), 350 acres  
Garnett - Crystal Lake (35 I5), 25 acres, **FFF**  
Garnett City Lake North (35 H5), 55 acres, **FFF**  
Gridley City Lake (46 B12), 33 acres  
Herington - Fr. Padilla Pond (33 C1), 2 acres  
Herington City Lake - New (33 C1), 555 acres  
Herington City Lake - Old (33 C1), 367 acres  
Hiawatha City Lake (11 D2), 7 acres  
Holton - Elkhorn Lake (10 J12), 4 acres  
Holton - Prairie Lake (11 J1), 78 acres, **FFF**  
Horton - Little Lake (11 G2), 10 acres  
Horton - Mission Lake (11 F2), 125 acres  
Jackson Co. Banner Creek Reservoir (10 J12), 535 acres, **FFF**  
Jackson Heights High School Pond (10 I12), 1 acre  
Junction City - Bluffs (21 H2), 5 acres  
Junction City - Homer's Pond (21 H2), 5 acres  
Junction City Wetland Park and Riverwalk Ponds (21 H2), 9 acres

**Aquatic Nuisance Species (ANS) ALERTS:** Aquatic nuisance species (ANS) pose a threat to native aquatic wildlife and plants. ANS species include the zebra mussel, New Zealand mud snail, Asian carp, white perch, purple loostripe, saltcedar, fertile grass carp, and Eurasian watermilfoil. The areas listed above may have a red "ANS Alert" if ANS have been found there. Please consult a current Kansas Fishing Regulations Summary for more information about ANS and how to prevent their spread.

Lansing City Lake (24 C8), 2 acres  
 Lansing City Lake #2 - Bernard Park Pond (24 C8), 2 acres  
 Lawrence - Mary's Lake (23 H5), 6 acres, **FFF**  
 Lawrence - Oregon Trail Park Pond (23 H4), 1.5 acres  
 Lawrence - Pat Dawson Billings N&S Lakes (23 H4), 10 acres  
 Lawrence - Sandra Shaw Pond (23 G5), 3 acres  
 Leawood - Ironwoods Park Pond (24 I11; B4 H12), 1.5 acres  
 Leawood - Tomahawk Parkway Lakes (24 H11; B4 E12), 5 acres  
 Lebo City Lake (34 G11), 70 acres  
 Lenexa - Lake Lenexa (24 G9; B3 C6), 30 acres, **FFF**  
 Lenexa - Mize Blvd. Lake (24 H8; B3 D4), 5 acres  
 Lenexa - Resurrection Pond (24 G10; B4 B9), 2 acres  
 Lenexa - Rose's Pond (24 G10; B4 B8), 2 acres, **FFF**  
 Linn Co. Critzer Res. (48 A8), 220 acres  
 Linn Co. Strip Pits (48 B11), 1 acre  
 Louisburg - Lewis/Young Park Lake (36 B10), 2 acres  
 Louisburg City Lake (36 C11), 23 acres  
 Manhattan - Jerry Dishman Lake (21 E4), 6 acres, **FFF**  
 Marysville - Country Club Lake (9 D4), 10 acres  
 Melvern - River Trail Area (35 E1) 0.6 miles  
 Mound City Lake (48 A9), 148 acres  
 Ogden City Lake (21 F3), 24 acres  
 Olathe - Blackbob Pk Pd (24 I10; B4 H8), 1 acre, **FFF**  
 Olathe - Cedar Lake (24 I9; B3 I6), 56 acres  
 Olathe - Frisco Lake (24 I9; B4 G7), 12 acres  
 Olathe - Heatherstone Park Pond (24 H10; B4 F8), 1 acre  
 Olathe - Lake Olathe (24 I9; B3 H5), 172 acres  
 Olathe - Mahaffie Farmstead Pond (24 I9; B4 F7), 1 acre  
 Olathe - Olathe E HS Pond (24 H10; B4 F8), 1 acre  
 Olathe - Oregon Trail Pond (24 I9; B3 H5), 2 acres  
 Olathe - Prairie Center Park Pond (24 I9; B3 G5), 5 acres, **FFF**  
 Olathe - Prairie Center Pond (24 I8; B3 H4), 1 acre, **FFF**  
 Olathe - Settler's Park Pond (24 H9; B3 E6), 1.5 acres  
 Olathe - Stagecoach Park Ponds (24 I9; B4 F7), 5 acres  
 Olathe - Waterworks Lakes (24 I9; B4 G7), 7 acres  
 Olpe City Lake (34 J8), 90 acres  
 Olpe Kids Pond (34 I8), 1 acre  
 Osage City Lake (34 D12), 49 acres  
 Osage Kids Fishing Pond (34 C12), 1 acre  
 Osawatomie - Beaver Lake (36 D8), 3 acres  
 Osawatomie City Lake (36 D8), 21 acres  
 Overbrook City Lake (35 A2), 3 acres  
 Overbrook Kids Pond (35 A2), 3 acres, **FFF**  
 Overland Park - Amesbury Lake (24 I10; B4 G9), 3.65 acres  
 Overland Park - Kingston Lake (24 I11; B4 I11), 8 acres  
 Overland Park - Regency Park Lake (24 I11; B4 H11), 3 acres  
 Overland Park - South Lake (24 G10; B4 B11), 5 acres, **FFF**  
 Overland Park - Summercrest Lake (24 H10; B4 E11), 1.35 acres  
 Overland Park - Wilderness Lake (24 I11; B4 I12), 3 acres  
 Paola - Lake Miola (36 C9), 220 acres, **FFF**  
 Parker City Lake (36 H8), 7 acres  
 Pleasanton City Lake - East (36 J11), 127 acres  
 Pleasanton City Lake - Old (36 J10), 11 acres  
 Pleasanton City Lake - West (36 J10), 32 acres  
 Pottawatomie Co. Cross Creek Lake (22 A9), 49 acres  
 Richmond City Lake (35 G5), 21 acres  
 Sabetha - Pony Creek Lake (10 B12), 171 acres  
 Sabetha City Lake (10 C11), 100 acres

Shawnee - Monticello Springs Lake (24 G9; B3 B5), 1.5 acres  
 Shawnee Co. - Lake Shawnee (23 G1; A2 G8), 416 acres, **FFF, ANS Alert**  
 Shawnee Co. - Shawnee Jr. (23 G1; A2 G8), 2 acres, **FFF**  
 Spring Hill - Woodland Ridge (36 A9), 2.5 acres  
 Spring Hill City Lake (36 A9), 38 acres  
 Topeka - Auburndale Park Stream (23 F1; A1 D5), 2 acres  
 Topeka - Cedar Crest Pond (22 F12; A1 D4), 3 acres  
 Topeka - Central Park Lake (23 G1; A1 E6), 3 acres  
 Topeka - Clarion Park Pond (22 G12; A1 G4), 4 acres  
 Topeka - Freedom Valley Lake (22 G1; A2 E7), 1 acre  
 Topeka - Governor's Ponds West/East (22 F12; A1 D4), 1 acre  
 Topeka - Horseshoe Bend Park Pond (23 H1; A1 H6), 1 acre  
 Topeka - West Lake (22 F12; A1 D4), 6 acres, **FFF**  
 Wamego City Lake (22 D7), 1 acre, **FFF**  
 Waterville City Lake (9 F3), 9 acres  
 Wyandotte Co. - Big 11 (24 E11; B2 D11), 3 acres, See local regs  
 Wyandotte Co. - Park Pond (Bonner Lake) (24 E8; B1 E4), 7 acres, See local regulations

### REGION 3 (SOUTHEAST)

Altamont - Idle Hour Lake East & West (59 G5), 34 acres  
 Andale - Renwick USD 267 Pond (44 G7)  
 Andover - Lake George (44 I12), 3 acres, **FFF**  
 Anthony City Lake (55 H3), 116 acres, **FFF**, Periodically Dry  
 Ark City - Knebler #1 (57 I1), 16 acres  
 Ark City - Knebler #2 (57 I1), 5 acres  
 Ark City - Veteran's Pond (57 I1), 16 acres  
 Arma City Lake (48 J11), 1 acre, **FFF**  
 Bartlett City Lake (59 I6), 19 acres  
 Baxter Springs - Riverside Park Pond (60 I11) 1.3 acres  
 Benton - Poling Park Lake (44 G12), 2 acres  
 Bone Creek Res (48 I11), 540 acres, **FFF**  
 Bourbon Co. - Cedar Creek Res (48 F10), 220 acres  
 Bourbon Co. - Elm Creek Lake (48 G9), 106 acres  
 Buhler City Pond (43 B5), 1 acre  
 Carey Park Lagoon & Fishing Pond (43 D4), 6 acres  
 Chanute - Highland Park Pond (47 I3), 1 acre, **FFF**,  
 See local regulations  
 Chanute City Lake (Santa Fe Lake) (47 I3), 80 acres, **FFF**  
 Cherryvale - Tanko (59 E3), 11 acres  
 Clearwater - Chisholm Ridge Lakes (56 B8; C3 J2)), 5 acres  
 Coffeyville - LeClere Lake (59 I2), 7 acres  
 Columbus - VFW Pond (60 G10), 2 acres  
 Colwich City Lake (44 G8; C1 E1), 10 acres  
 Council Grove City Lake (33 C5), 434 acres, **ANS Alert**  
 Derby - High Park (56 A11; C4 H10), 4 acres, **FFF**  
 Derby - Rainbow Valley (56 A11; C4 G10), 2 acres  
 Derby - Stone Creek (56 A11; C4 F9), 2 acres  
 Edna City Lake (59 I4), 11 acres  
 El Dorado - East Park Pond (45 G2), 1 acre  
 Eureka City Lake (46 E7), 259 acres, **FFF**  
 Fort Scott - Lake Fort Scott (48 G10), 350 acres  
 Frontenac City Lake (60 B11), 5 acres  
 FSCC Lakes (48 F11), 2 acres  
 Ft. Scott - Gunn Park East (48 F11), 2 acres  
 Ft. Scott - Gunn Park West (48 F11), 11 acres  
 Ft. Scott - Rock Creek Lake (48 F10), 75 acres

**Aquatic Nuisance Species (ANS) ALERTS:** Aquatic nuisance species (ANS) pose a threat to native aquatic wildlife and plants. ANS species include the zebra mussel, New Zealand mud snail, Asian carp, white perch, purple loostripe, saltcedar, fertile grass carp, and Eurasian watermilfoil. The areas listed above may have a red "ANS Alert" if ANS have been found there. Please consult a current Kansas Fishing Regulations Summary for more information about ANS and how to prevent their spread.



Greenbush Community Lake (60, A8), 5 acres  
 Harvey Co. - East Park Lake (44 C11), 254 acres, **FFF**  
 Harvey Co. - West Park Lake (44 C7), 15 acres, **FFF**  
 Harvey Co. Camp Hawk (44 D10), 2 acres, **FFF**  
 Haysville - Dorner Park Lake (56 A10, C4 G7) 9 acres  
 Haysville - Riggs Lake (56 A10; C3 G6), 1 acre, **FFF**  
 Howard - Polk Daniels Lake (58 B8), 69 acres  
 Humboldt - Franklin Street Park Pond (47 G4), 1.5 acres  
 Hutchinson - Carey Park Pond (43 D4), 5 acres, **FFF, ANS Alert**  
 Hutchinson - Carey Park Lagoon (43 D4), 1 acre, **FFF, ANS Alert**  
 Hutchinson - Dillon Nature Center (43 C4), 3 acres, **FFF**  
 Hutchinson - North Pond (43 C4), 2 acres  
 Hutchinson - River Access Park (43 L3) River Access  
 Iola - Cedarbrook Ponds (47 D4), 3 acres  
 Kechi Lake (44 G10; C2 D9), 1 acre  
 Kingman - Hoover Pond (43 J2), 1 acre, **ANS Alert**  
 Madison City Lake (46 B9), 114 acres  
 Marion - Central Park - (33, H1), 2 acres  
 Marion County Lake (33 I1), 153 acres, **FFF**  
 McPherson - Lakeside Park - (32, H7), 5 acres, **FFF**  
 Moline New City Lake (58 C8), 185 acres  
 Moline Old City Lake (South) (58 D7), 65 acres  
 Mt. Hope - Woodland Park Pond (44 F7), 2 acres  
 Mulberry Park Lake (48 J12), 3 acres  
 Mulvane - Cedar Brook Pond (56 B11), 1 acre  
 Neodesha City Pond (59 C1) 2 acres  
 Newton - Sand Creek (44 C10), 20 acres  
 Newton - Spring Lake Ponds (44 D10), 7 acres,  
 North Newton - Sunfield Pond (44 C10), 2 acres,  
 Park City - Chisholm Pointe LK (44 G10; C2 D8), 3 acres, **FFF**  
 Parsons - Tolen Creek Pd (59 D6), 5 acres, See local regulations  
 Parsons - West Pond (59 D5), 1 acre, See local regulations  
 Parsons City Lake (59 C5), 980 acres  
 Pittsburg - University Lake (60 C11), 2 acres  
 Pittsburg - Lakeside (60 C11), 4 acres  
 Pittsburg - Lincoln Park Lake (60 B11), 1 acre

Pittsburg - Wilderness Park Ponds (60 B11), 3 acres  
 Rose Hill School Street Pond (56 A12), 9 acres  
 Sedan New City Lake (South) (58 G9), 70 acres  
 Sedan Old City Lake (North) (58 G9), 55 acres  
 Sedgwick Co. - Lake Afton (44 J7), 258 acres, **FFF, ANS Alert**  
 Severy City Lake (46 J9), 10 acres  
 Sterling City Lake (43 A1), 10 acres, **FFF**  
 Thayer City Lake (59 B3), 30 acres  
 Thayer City Lake - New (59 B3), 45 acres  
 Uniontown School Pond (48 E8), 2 acres  
 Valley Center - Arrowhead Park Lake (44 G9; C1 B5), 5.4 acres  
 Valley Center - McLaughlin Pond (44 G9; C1 B6), 3 acres  
 Wellington - Hargis Creek Lake (56 F10), 65 acres  
 Wellington City Lake (56 G8), 674 acres, **FFF**  
 Wichita - Blackbird & Sunflower Ponds (SP1&SP2)  
 (44 H8; C1 F2), 12 acres  
 Wichita - Buffalo Park Lake (44 I8; C1 J3), 12 acres, **FFF**,  
 Under Renovation  
 Wichita - Chisholm Island Pond (44 H11; C2 G9), 5 acres, **FFF**  
 Wichita - Chisholm North Lake (44 H11; C2 G9), 23 acres, **FFF**  
 Wichita - Cruiser Lake (44 H10; C2 G7), 35 acres, **FFF**  
 Wichita - Dillon's Pond (44 I8; C1 J2), 2 acres, **FFF**  
 Wichita - Emery Park Pond (44 J10; C4 D8), 7 acres, **FFF**  
 Wichita - Harrison Park Pond (44 I11; C4 A10), 1 acre, **FFF**  
 Wichita - KDOT East Lake (44 H10; C2 F7), 7 acres  
 Wichita - KDOT West Lake (44 H10; C2 F7), 10 acres, **ANS Alert**  
 Wichita - Sedgwick Co. Park Lakes (44 I9; C1 H4), 63 acres,  
**FFF, ANS Alert**  
 Wichita - South Lake (56 A10; C3 F6), 17 acres, **ANS Alert**  
 Wichita - Watson Park Lake (44 J10; C4 C7), 42 acres, **FFF**  
 Windom City Lake (31 H4), 1 acre  
 Winfield - Island Park Lake (57 F1), 7 acres  
 Yates Center - South (Owl) (47 F1), 250 acres  
 Yates Center City Lake (46 F12), 200 acres

## ADDITIONAL FISHING FEES ARE CHARGED at the following lakes:

### REGION 2 (NORTHEAST)

Esksridge - Lake Wabunsee (22 J8), 214 acres, **ANS Alert**  
 JO Co. - Antioch Ponds (24 G10; B2 I10)), 1 acre  
 JO Co. - Heritage Park Lake (24 I10; B4 I8), 20 acres  
 JO Co. - Kill Creek Lake & Ponds (24 H7; B3 F2), 30 acres  
 JO Co. - Shawnee Mission Lake (24 G9; B4 B7), 121 acres  
 JO Co. - Stoll Park Lake (24 H10; B4 E9), 2 acres  
 Lebo Kids Pond (34 G12), 2 acres  
 New Strawn City Lake (35 I1), 3 acres  
 WY Co. - Pierson Park Lake (24 F10; B2 G9), 12 acres  
 Wyandotte County Lake (24 D9; B2 B7), 407 acres, **ANS Alert**

### REGION 3 (SOUTHEAST)

Winfield City Lake (57 D2), 1,200 acres, **ANS Alert**

**Aquatic Nuisance Species (ANS) ALERTS:** Aquatic nuisance species (ANS) pose a threat to native aquatic wildlife and plants. ANS species include the zebra mussel, New Zealand mud snail, Asian carp, white perch, purple loostripe, saltcedar, fertile grass carp, and Eurasian watermilfoil. The areas listed above may have a red "ANS Alert" if ANS have been found there. Please consult a current Kansas Fishing Regulations Summary for more information about ANS and how to prevent their spread.

# Aquatic Nuisance Species (ANS)



## STOP AQUATIC HITCHHIKERS!



*Please Remember*  
**CLEAN • DRAIN • DRY**  
**Boats and Equipment**

[www.ksoutdoors.com](http://www.ksoutdoors.com)

**ANS Awareness Course**  
**ProtectKSWaters.org**

It is illegal to transport certain species in Kansas. Protect yourself and your natural resources.

**Livewells and bilges must be drained and drain plugs removed from all vessels being removed from waters of the state before transport on a public highway.**

Before leaving any body of water:

### **CLEAN**

**Inspect** all equipment for anything attached (plants, animals, and mud) and **remove** anything that is found.

### **DRAIN**

**Drain** all water from equipment (livewell, bilge, bait buckets) before using at a different location.

### **DRY**

**Dry** all equipment for a minimum of 5 days before using again. If you need to use it sooner, **wash** with hot (140°) water.

Non-native species pose a serious threat to Kansas waters. If you find one of these species, do not release it back into the water. Contact the Emporia Research Office at (620) 342-0658 or your local KDWP office.

**IT IS AGAINST STATE AND FEDERAL LAW TO RELEASE ANY EXOTIC SPECIES IN KANSAS WATERS.**

## Zebra Mussel

- Zebra mussels are found in some Kansas lakes, impoundments and streams. An **ANS-Alert** listing throughout this publication identifies locations known to contain asian carp, white perch, and/or zebra mussels. Fish may not be transported live from these waters. A more complete listing of affected waters can be found in the current fishing regulations summary.



- They filter vast quantities of water, which alters the entire food web within a waterbody. Although this filtering action may clear up the water in some instances, the clear water will often lead to algae blooms that are harmful to people. The clear water can also allow UV rays to damage fish eggs.
- They can reach high densities, causing problems to water intakes, docks, and boat motors. Nationwide expenditures to control zebra mussels in industrial plants alone are estimated at \$310 million per year.
- They have sharp shells that can cut the unprotected skin of humans or pets. Shoes or other protective clothing are recommended when wading in zebra mussel infested water.
- All aquatic users need to do their part to prevent the spread of zebra mussels to other waters in Kansas. Follow control recommendations and tell others how to prevent the spread of zebra mussels.

## White Perch



- White perch are found in some Kansas lakes, impoundments and streams. An **ANS-Alert** listing throughout this publication identifies locations known to contain asian carp, white perch, and/or zebra mussels. Fish may not be transported live from these waters. A more complete listing of affected waters can be found in the current fishing regulations summary.
- White perch have been associated with declines in both walleye and white bass populations.
- They out-compete native fishes for food and space.
- They hybridize with white bass.
- KDWP has added white perch to the prohibited species list. The possession of live white perch is prohibited. Dead white perch may still be possessed or used as bait on the waters where they were taken.
- Spiny and soft dorsal fins are connected; both fins pop-up when spiny dorsal manually erected.



**Habitattitude**™  
PROTECT OUR ENVIRONMENT  
DO NOT RELEASE FISH AND AQUATIC PLANTS

PIJAC • U.S. FISH & WILDLIFE SERVICE • NOAA'S SEA GRANT

[www.Habitattitude.net](http://www.Habitattitude.net)

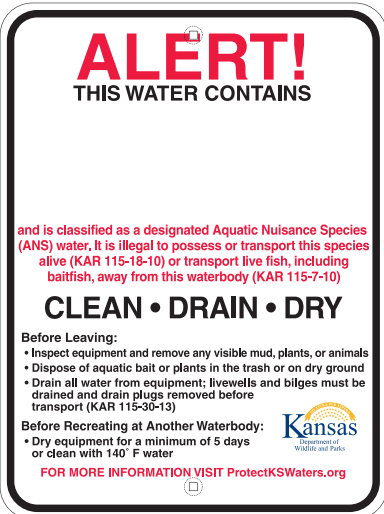
### Alternatives to Release

- Contact a retailer for proper handling advice or for possible returns
- Give/trade with another aquarist, pond owner, or water gardener
- Donate to a local aquarium society, school, or aquatic business
- Seal aquatic plants in plastic bags and dispose in the trash
- Contact a veterinarian or pet retailer for humane disposal guidance
- Know your state regulations regarding these alternatives

# Aquatic Nuisance Species (ANS)

## ANS Waters

Waters containing asian carp, white perch, and/or zebra mussels are classified as ANS designated waters. Anglers fishing ANS designated waters may not leave those waters with any live fish. ANS designated waters are listed below. New waters may be included whenever asian carp, white perch, and/or zebra mussels are discovered. ANS designated waters will be posted with the sign illustrated to the right.



### ALLEN COUNTY

Neosho R.

### ATCHISON COUNTY

Brewery Cr. • Camp Cr. • Crooked Cr. • Deer Cr. • Independence Cr. • Little Stranger Cr. • Little Walnut Cr. • Missouri R. • Mooney Cr. • North Fork Stranger Cr. • Owl Cr. • Spring Cr. • Stranger Cr. • Walnut Cr. • Whiskey Cr.

### BROWN COUNTY

Buttermilk Cr. • Euchre Cr. • Fox Cr. • Middle Fork Wolf R. • Mulberry Cr. • Noharts Cr. • North Fork Wolf R. • Pedee Cr. • Pony Cr. • Roys Cr. • South Fork Wolf R. • Spring Branch • Spring Cr. • Squaw Cr. • Terrapin Cr. • Walnut Cr. • Wolf R.

### BUTLER COUNTY

El Dorado East Pk. Pd. • El Dorado Res. • Walnut R.

### CHASE COUNTY

Chase SFL • Cottonwood R. • Panther Cr.

### CHEROKEE COUNTY

Neosho R.

### CLAY COUNTY

Millford Res.

### CLOUD COUNTY

Solomon R.

### COFFEY COUNTY

Coffey Co. Lk. • John Redmond Res. • Lebo City Lake • Neosho R. • Wolf Creek

### COWLEY COUNTY

Arkansas R. • Timber Cr. • Walnut R. • Winfield CL

### DICKINSON COUNTY

Kansas R. • Smoky Hill R. • Solomon R.

### DONIPHAN COUNTY

Browning Oxbow • Brush Cr. • Cedar Cr. • Charlie Cr. • Cold Ryan Branch • Coon Cr. • Fox Cr. • Halling Cr. • Independence Cr. • Jordan Cr. • Kenney

Cr. • Mill Cr. • Mission Cr. • Missouri R. • Mosquito Cr. • Nelson Cr. • North Branch Independence Cr. • Pennell Cr. • Peters Cr. • Rittenhouse Branch • Rock Cr. • Smith Cr. • Springs Branch • Spring Cr. • Striker Branch • Squaw Cr. • Walnut Cr. • Wolf R.

### DOUGLAS COUNTY

Captain Cr. • Chicken Cr. • Clinton Res. • Coal Cr. • Kansas R. • Little Wakarusa Cr. • Mud Cr. • Spring Cr. • Wakarusa R. • Washington Cr.

### ELLIS COUNTY

Smoky Hill R.

### ELLSWORTH COUNTY

Kanopolis Res. • Smoky Hill R.

### FRANKLIN COUNTY

Marais des Cygnes R.

### GEARY COUNTY

Geary SFL • Kansas R. • Lyons Cr. • Milford Res. • Republican R. • Smoky Hill R.

### JEFFERSON COUNTY

Crooked Cr. • Dawson Cr. • Delaware R. • Fall Cr. • Howard Cr. • Hulls Branch • Indian Cr. • Kansas R. • Mooney Cr. • Mud Cr. • Ninemile Cr. • Perry Res. • Plum Cr. • Prairie Cr. • Scatter Cr. • Walnut Cr.

### JOHNSON COUNTY

Blue R. • Camp Branch • Captain Cr. • Clear Cr. • Camp Cr. • Cedar Cr. • Coffee Cr. • Coon Cr. • Hillsdale Res. • Indian Cr. • Kansas R. • Kill Cr. • Little Cedar Cr. • Little Mill Cr. • Mill Cr. • Negro Cr. • Spoon Cr. • Tomahawk Cr. • Turkey Cr. • Wolf Creek

### KINGMAN COUNTY

Cheney Res. • Kingman Hoover Pd. • North Fork Ninescah R. • South Fork Ninescah R.

### LABETTE COUNTY

Neosho R.

### LEAVENWORTH COUNTY

Branch Cr. • Brush Cr. • Buckhorn Cr. • Buttermilk Cr. • Corral Cr. • Cow Cr. • Cramer Cr. • Dawson Cr. • Fall Cr. • Fivemile Cr. • Hog Cr. • Island Cr. • Jarbalo Cr. • Kansas R. • Kent Cr. • Little Kaw Cr. • Little Sandy Cr. • Little Snell Cr. • Little Stranger Cr. • Missouri R. • Mud Cr. • Murray Cr. • Ninemile Cr. • Plum Cr. • Pony Cr. • Prairie Cr. • Quarry Cr. • Salt Cr. • Sevenmile Cr. • Stranger Cr. • Threemile Cr. • Tonganoxie Cr. • Walnut Cr. • West Brush Cr. • Wolf Creek

### LINCOLN COUNTY

Saline R. • Wilson Res.

### LINN COUNTY

Linn Valley Lakes-Main Lake • Marais des Cygnes R.

### LYON COUNTY

Cottonwood R. • John Redmond Res. • Melvern Res. • Neosho R. • Lyon SFL

### MARION COUNTY

Cottonwood R. • Marion Res.

### MARSHALL COUNTY

Clear Cr. • Manley Cr. • Pole Cr. • Tuttle Creek Res. • Tuttle Creek Res.-River Pd.

### MCPHERSON COUNTY

Emerald Lk. • Smoky Hill R.

### MIAMI COUNTY

Hillsdale Res. • Bull Cr. • Marias des Cygnes R. • Dorsey Branch • Paola CL (Lake Miola) • South Wea Cr.

### MITCHELL COUNTY

Glen Elder Res. • Solomon R.

### MORRIS COUNTY

Canning Cr. • Council Grove CL • Council Grove Res. • Neosho R.

### NEMAHA COUNTY

Burger Cr. • Clear Cr. • Deer Cr. • Fisher Cr. • Fourmile Cr. • Harris Cr. • Honey Cr. • Illinois Cr. • Manley Cr. • Negro Cr. • North Fork Wildcat Cr. • Pole Cr. • Rattlesnake Cr. • Rock Cr. • South Fork Big Nemaha R. • South Fork Wildcat Cr. • Tennessee Cr. • Turkey Cr. • Wildcat Cr. • Wolf Pen Cr.

### NEOSHO COUNTY

Neosho R.

### OSAGE COUNTY

Marais des Cygnes R. • Melvern Res. • Melvern River and Rearing Ponds • Pomona Res. • Osage SFL • 110-Mile Cr.

### OSBORNE COUNTY

Glen Elder Res.

### OTTAWA COUNTY

Saline R. • Solomon R.

### POTTAWATOMIE COUNTY

Big Blue R. • Jeffery Energy Center Make-up Lk. • Jeffery Energy Center Auxiliary Lk. • Kansas R. • Tuttle Creek Res. • Tuttle Creek River Pd.

### RENO COUNTY

Cheney Res. • Hutchinson Carey PK Pd. • Hutchinson Carey PK Lagoon

### RILEY COUNTY

Big Blue R. • Tuttle Creek Res. • Tuttle Creek River Pd.

### RUSH COUNTY

Smoky Hill R.

### RUSSELL COUNTY

Saline R. • Smoky Hill R. • Wilson Res.

### SALINE COUNTY

Saline R. • Smoky Hill R. • Solomon R.

### SEDGWICK COUNTY

Arkansas R. • Big Slough • Cheney Res. • Clearwater Cr. • Emerald Bay • Lake Afton • Ninescah R. • North Fork Ninescah R. • South Fork Ninescah R. • Sedgwick Co. PK Lakes • Spirit/Boeing Employee Assoc. Lk. • Wichita-South Lake • MS Mitch Mitchell Floodway • Wichita-West KDOT

### SHAWNEE COUNTY

Deer Cr. • Kansas R. • Lake Shawnee • Shunganunga Cr.

### SUMNER COUNTY

Arkansas R. • Chikaskia R. • East Prairie Cr. • Ninescah R. • Prairie Cr. • Wellington CL

### TREGO COUNTY

Cedar Bluff Res. • Smoky Hill R.

### WABAUNSEE COUNTY

East Branch of Mill Cr. • Kansas R. • Lake Wabaunsee • Mill Cr. • South Branch Mill Cr.

### WOODSON COUNTY

Neosho R.

### WYANDOTTE COUNTY

Betts Cr. • Brenner Heights Cr. • Conner Cr. • Eddy Cr. • Honey Cr. • Island Cr. • Jersey Cr. • Kansas R. • Little Turkey Cr. • Marshall Cr. • Mattoon Cr. • Mill Cr. • Missouri R. • Munice Cr. • Nearman Cr. • Piper Cr. • Turkey Cr. • West Mission Cr. • Wolf Creek • Wyandotte Co. Lk.

## Wild-caught Bait

Live baitfish, crayfish, leeches, amphibians, and mussels may be caught and used as live bait only within the common drainage where caught. However, bluegill and green sunfish collected from non-designated aquatic nuisance waters may be possessed or used as live bait anywhere. Live baitfish shall not be transported and used above any upstream dam or barrier that prohibits the normal passage of fish. Live baitfish collected from designated aquatic nuisance waters shall be possessed or used as live bait only while on that water and shall not be transported from the water alive.



# Fishing Resources

## HuntFish KS Mobile App



Now you can purchase and store your Kansas hunting and fishing licenses from any mobile device!

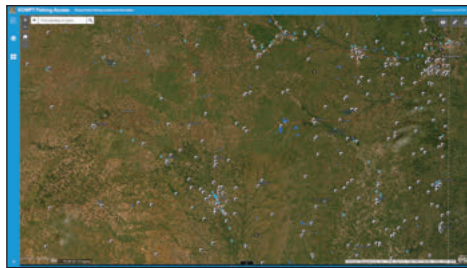
Available for Android and Apple/iOS devices. See device app store for details.

## Online Atlas



Download an electronic version of the Kansas Fishing Atlas at [ksoutdoors.com](http://ksoutdoors.com).

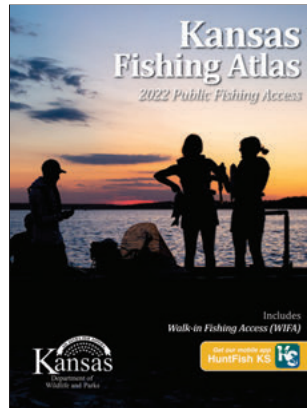
## Interactive Mapping



Access searchable maps highlighting Kansas' public fishing access locations from

[ksoutdoors.com](http://ksoutdoors.com). Click on individual tracts and points to display location information, zoom to areas by city or county name, and choose from various base map options.

## Printed Atlas



Printed copies of the Kansas Fishing Atlas are available at most license vendors. See [ksoutdoors.com](http://ksoutdoors.com) to find a vendor nearest you.

# Enroll Your Land



Earn extra dollars from your farm/ranch with the Walk-in Fishing Access (WIFA) program and the Walk-In Hunting Access (WIHA) program. Wildlife and Parks will be leasing ponds and river/creek access for anglers. Wildlife and Parks will be leasing CRP, standing cover crop, milo stubble, field borders, and river/creek habitat for this coming fall hunting season and next spring's turkey hunting season.

## Highlights of the program:

- KDWP pays you to allow hunting or fishing access on your land.
- KDWP will post signs to inform users of property boundaries.
- KDWP natural resource officers periodically patrol the land.
- Access by foot only. No vehicles allowed.
- State law limits normal liability.
- An atlas is printed showing all properties enrolled.

## WIFA/WIHA Application

I am interested in enrolling my property in the WIFA/WIHA programs. Send me more information.

Name: \_\_\_\_\_

Address: \_\_\_\_\_

City: \_\_\_\_\_

Day Phone: \_\_\_\_\_

Evening Phone: \_\_\_\_\_

Property is located in: \_\_\_\_\_  
(County)

Send to:  
Attn: FISH & WILDLIFE  
KDWP  
512 SE 25th Ave.  
Pratt, KS 67124

## Game Wardens

Anyone who finds evidence of wildlife crime while afield should contact their local game warden. Details of the crime and any other information, such as license tag numbers, dates, and times, should be noted. Local game wardens can be contacted through county sheriffs' offices, by phoning the KDWP's **Operation Game Thief, 1-877-426-3843**, or by phoning one of the numbers listed below, for the county in which the crime was witnessed.

**Please do not use these numbers for general information calls. General information may be obtained from ksoutdoors.com, by phoning the department's Public Affairs Section at (620) 672-5911 or by calling the local offices listed in this publication.**

If you're an active outdoorsman or woman, or just concerned about conservation in your area, get to know your local game warden. They protect the resource in your area. The following list of game warden numbers and the counties for which they are responsible are provided to help concerned citizens curb wildlife crime in Kansas:

County	Officer Phone	County	Officer Phone	County	Officer Phone
Allen	(620) 212-0183	Greenwood	(620) 431-8775	Ottawa	(785) 452-0478
Anderson	(785) 221-2694	Hamilton	(620) 282-7009	Pawnee	(620) 770-9564
Atchison	(785) 230-8466	Harper	(620) 727-6893	Phillips	(785) 342-7311
Barber	(620) 770-9035	Harvey	(316) 215-2119	Pottawatomie	(785) 256-3603
Barton	(620) 770-6083	Haskell	(620) 388-7790	Pratt	(620) 770-9035
Bourbon	(620) 432-5058	Hodgeman	(620) 450-7194	Rawlins	(785) 260-1149
Brown	(785) 256-1202	Jackson	(785) 256-3619	Reno	(316) 215-2124
Butler	(316) 215-2123	Jefferson (E1/2)	(620) 450-7185	Republic	(620) 770-9085
Chase	(620) 340-5968	Jefferson (W1/2)	(785) 256-3619	Rice	(620) 242-4122
Chautauqua	(620) 388-7643	Jewell	(785) 250-7028	Riley	(785) 256-3614
Cherokee	(620) 431-8834	Johnson	(913) 205-2155	Rooks	(785) 342-7265
Cheyenne	(785) 342-7382	Kearny	(620) 282-7009	Rush	(620) 770-6083
Clark	(620) 262-7019	Kingman	(620) 727-6893	Russell	(620) 770-6148
Clay	(785) 230-7148	Kiowa	(620) 727-4822	Saline	(785) 452-0478
Cloud	(620) 770-9085	Labette	(620) 875-2275	Scott	(785) 230-5593
Coffey	(785) 207-3151	Lane	(620) 770-6218	Sedgwick	(316) 215-2119
Comanche	(620) 727-4822	Leavenworth	(785) 256-1204	Seward	(620) 388-2951
Cowley	(620) 229-3104	Lincoln	(785) 342-7276	Shawnee	(785) 230-4434
Crawford (N1/2)	(620) 432-5058	Linn	(785) 230-3567	Sheridan	(785) 230-5960
Crawford (S1/2)	(620) 431-8834	Logan	(785) 230-5593	Sherman	(785) 342-7382
Decatur	(785) 230-5960	Lyon	(620) 431-9873	Smith	(785) 250-7028
Dickinson	(785) 256-3606	Marion	(620) 727-3386	Stafford	(620) 770-9564
Doniphan	(785) 230-8466	Marshall	(785) 256-1207	Stanton	(620) 388-7790
Douglas	(785) 230-2148	McPherson	(620) 242-4122	Stevens	(620) 388-2951
Edwards	(620) 770-9564	Meade	(620) 262-7019	Sumner	(620) 326-1866
Elk	(620) 388-7643	Miami	(785) 230-7538	Thomas	(785) 260-1149
Ellis	(620) 770-6148	Mitchell	(785) 243-0553	Trego	(785) 483-0504
Ellsworth	(785) 342-7276	Montgomery	(620) 432-5057	Wabaunsee	(785) 260-1954
Finney	(620) 770-6218	Morris	(620) 340-5968	Wallace	(785) 342-7382
Ford	(620) 262-7019	Morton	(620) 388-2951	Washington	(785) 256-1207
Franklin	(785) 221-2694	Nemaha	(785) 256-1202	Wichita	(785) 230-5593
Geary	(785) 338-0096	Neosho N1/2	(620) 212-0183	Wilson	(620) 875-1976
Gove	(785) 483-0504	Neosho S1/2	(620) 875-2275	Woodson	(620) 875-1976
Graham	(785) 342-7265	Ness	(620) 450-7194	Wyandotte	(785) 256-1204
Grant	(620) 388-7790	Norton	(785) 342-7311		
Gray	(620) 450-7194	Osage	(620) 450-7264		
Greeley	(620) 282-7009	Osborne	(785) 243-0553		

## Area Information Contacts

### Kansas Department of Wildlife and Parks

Office of the Secretary	(785) 296-2281
Pratt Operations Office	(620) 672-5911
Region 1 Office	(785) 628-8614
Region 2 Office	(785) 273-6740
Region 3 Office	(316) 683-8069
Chanute District Office	(620) 431-0380
Dodge City District Office	(620) 227-8609
Garden City District Office	(620) 276-8886
Kansas City District Office	(913) 422-1314
Emporia Research Office	(620) 342-0658

### Area & State Park Offices

Cedar Bluff	(785) 726-3212
Cheney	(316) 542-3664
Cheyenne Bottoms	(620) 793-7730
Clinton	(785) 842-8562
Council Grove	(620) 767-5900
Crawford	(620) 362-3671
Cross Timbers	(620) 637-2213
Eisenhower	(785) 528-4102
El Dorado	(316) 321-7180
Elk City	(620) 331-6295
Fall River	(620) 637-2213
Glen Elder	(785) 545-3345
Hillsdale	(913) 594-3600

Kanopolis	(785) 546-2565
Kaw River	(785) 273-6740
Lovewell	(785) 753-4971
Marais des Cygnes	(913) 352-8941
Meade	(620) 873-2572
Milford	(785) 238-3014
Mined Land	(620) 231-3173
Perry	(785) 246-3449
Pomona	(785) 828-4933
Prairie Dog/Norton	(785) 877-2953
Sandsage Wildlife Area	(620) 276-8886
Pratt Sandhills	(620) 672-5911
Scott	(620) 872-2061
Tuttle Creek	(785) 539-7941
Webster	(785) 425-6775
Wilson	(785) 658-2465

This program receives federal financial assistance from the U.S. Fish and Wildlife Service. Under Title VI of the Civil Rights Act of 1964, Section 504 of the Rehabilitation Act of 1973, Title II of the Americans with Disabilities Act of 1990, the Age Discrimination Act of 1975, Title IX of the Education Amendments of 1972, the U.S. Department of the Interior and its bureaus prohibit discrimination on the bases of race, color, national origin, age, disability or sex (in educational programs). If you believe that you have been discriminated against in any program, activity or facility, or if you desire further information please write to: U.S. Fish and Wildlife Service, Officer for Diversity and Civil Rights Programs, External Programs, 4040 North Fairfax Drive, Suite 130 Arlington, VA 22203 02/22

### Federal Wildlife Areas

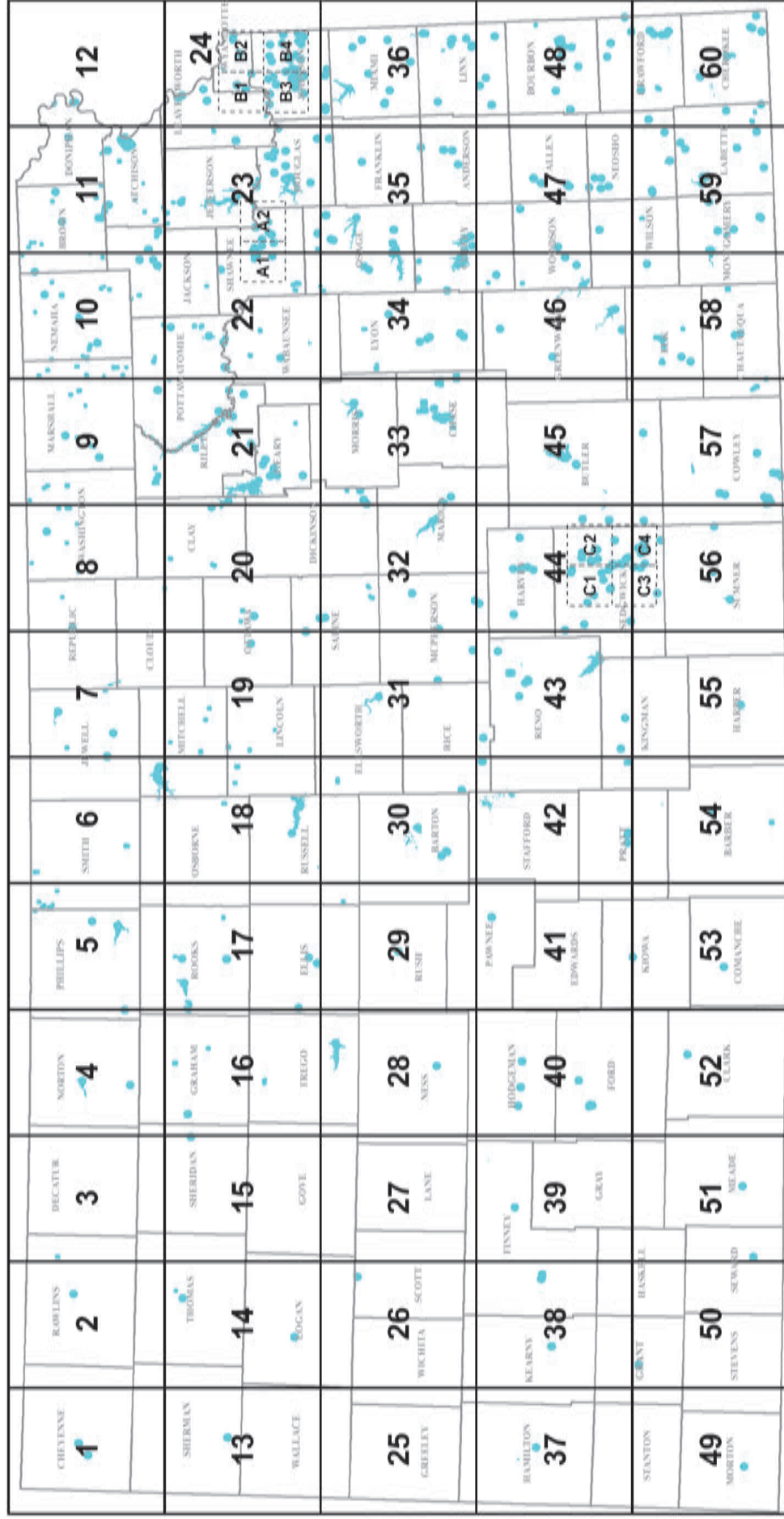
Cimarron Grasslands	(620) 697-4621
Flint Hills NWR	(620) 392-5553
Marais des Cygnes NWR	(913) 352-8956
Quivira NWR	(620) 486-2393
Kirwin NWR	(785) 543-6673
Ft Riley	(785) 239-6211

### Corps of Engineers

Big Hill Reservoir	(620) 336-2741
Clinton Reservoir	(785) 843-7665
Council Grove Reservoir	(620) 767-5195
El Dorado Reservoir	(316) 321-9974
Elk City Reservoir	(620) 336-2741
Fall River Reservoir	(620) 658-4445
Hillsdale Reservoir	(913) 783-4366
John Redmond Reservoir	(620) 364-8614
Kanopolis Reservoir	(785) 546-2294
Marion Reservoir	(620) 382-2101
Melvorn Reservoir	(785) 543-3318
Milford Reservoir	(785) 238-5714
Perry Reservoir	(785) 597-5144
Pomona Reservoir	(785) 453-2202
Toronto Reservoir	(620) 658-4445
Tuttle Creek Reservoir	(785) 539-8511
Wilson Reservoir	(785) 658-2551

# Index To Kansas Fishing Atlas

## Map Pages



TAKE ME FISHING™



Federal Aid Project  
funded by your purchase  
of fishing equipment