

2008 Pronghorn Production Surveys

PERFORMANCE REPORT
STATEWIDE WILDLIFE RESEARCH AND SURVEYS

A Contribution of Pittman-Robertson Funds
Federal Aid in Wildlife Restoration

Grant W-39-R-15

Kansas Department of Wildlife and Parks

Mike Hayden
Secretary

Prepared by

Matt Peek
Furbearer Biologist

Joe Kramer, Director

Mike Mitchener,



August 2008

PERMISSION TO QUOTE

This is an annual progress report that may contain information that is subject to future modification or revision. Persons wishing to quote from this report, for reproduction or reference, should first obtain permission from the Chief of the Wildlife Section, Kansas Department of Wildlife and Parks, 512 SE 25th Avenue, Pratt, KS 67124.

EQUAL OPPORTUNITY STATEMENT

This program receives Federal financial assistance from the U.S. Fish and Wildlife Service. Under Title VI of the Civil Rights Act of 1964, Section 504 of the Rehabilitation Act of 1973, Title II of the Americans with Disabilities Act of 1990, the Age Discrimination Act of 1975, and Title IX of the Education Amendments of 1972, the U.S. Department of the Interior and its bureaus prohibit discrimination on the basis of race, color, national origin, age, disability or sex (in educational programs). If you believe that you have been discriminated against in any program, activity or facility, or if you desire further information, please write to:

**The U.S. Fish and Wildlife Service
Office of Diversity and Civil Rights Programs- External Programs
4040 North Fairfax Drive, Suite 130
Arlington, VA 22203**

2008 Pronghorn Production Surveys

Matt Peek

Pronghorn program coordinator

The 2008 aerial pronghorn production surveys have been completed. Total numbers of pronghorn observed in each pronghorn hunting unit and their respective buck:doe:fawn ratios are presented in **Table 1**. Survey routes and location of pronghorn observations for each hunting unit are provided in **Figures 1-3**.

Buck:doe ratios increased by approximately 15 bucks per 100 does from last year's statewide average of 32 bucks per 100 does (**Figure 4**). The current ratio of 47 bucks per 100 does is the highest average recorded since 1996, and only the second time since 2000 the average has been over 40 bucks per 100 does. The cumulative buck ratio falls on the high side between recognized ratios for maximum recruitment (25:100) and trophy production (50:100). Unit 17 has maintained a higher buck:doe ratio than the other units since 2002. Unit 18 buck:doe ratios remain lower than those in other units despite a recorded annual harvest of just 5-10 pronghorn per year, which is far below the level of harvest that would be expected to impact buck ratios based on even the most conservative production and population estimates.

After a year of just fair recruitment, fawn:doe ratios rebounded nicely to an average of 73 fawns per 100 does. This is the 5th year of the last 6 that can be classified as good (over 60 fawns per 100 does) (**Figure 5**).

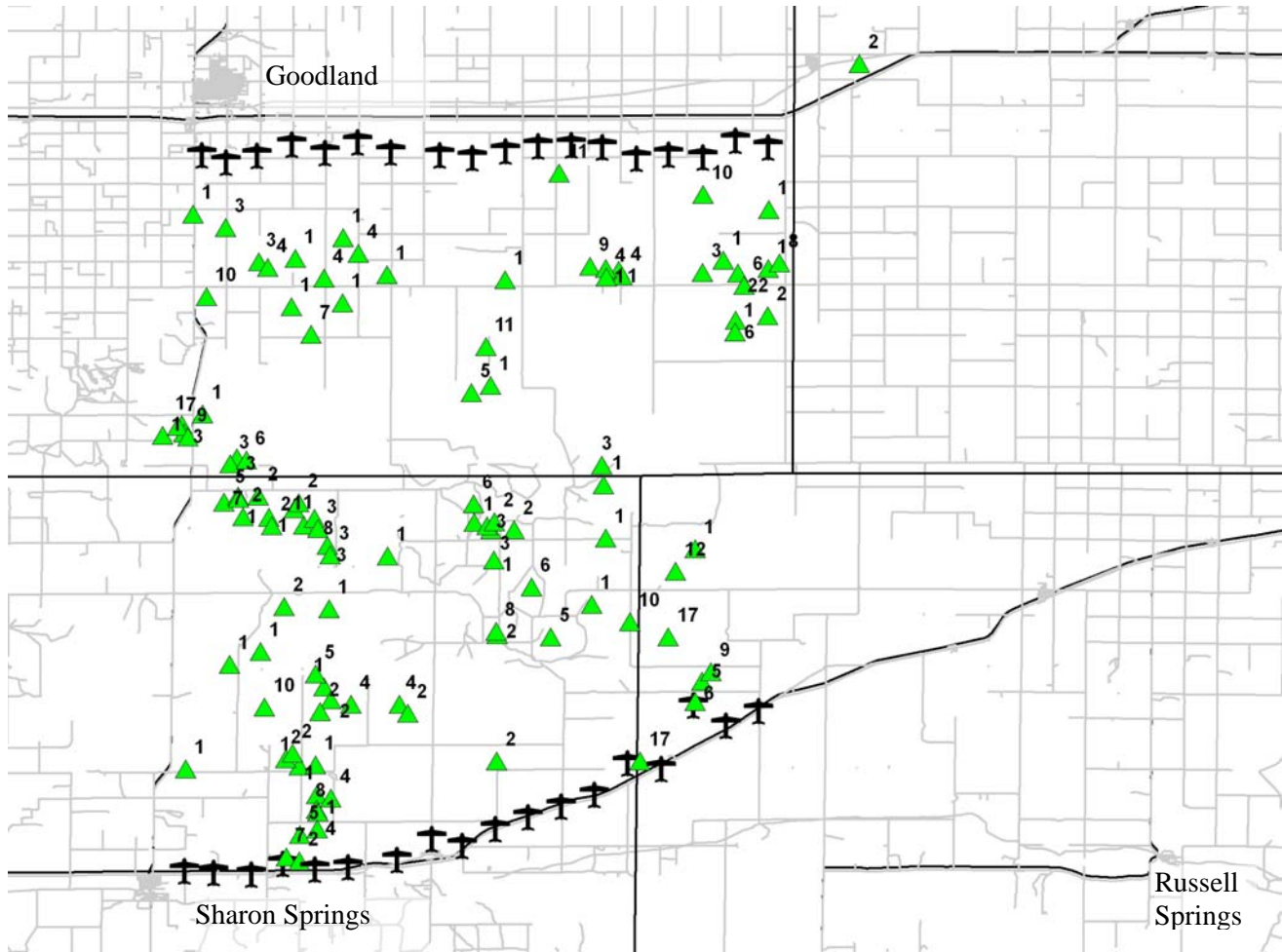
Data for the small Flint Hills population is presented in **Table 2**. Only 22 pronghorn were observed. However, both ratios and past counts indicate pronghorn are being missed by observers on this route. Pronghorn are much more difficult to spot in this hilly terrain, and several other factors seem to be contributing to the difficulties of accurately counting this population. We will plan on conducting a "count" of this population this winter, when the pronghorn will be herded up and hopefully more observable.

Table 1. Results of summer 2008 aerial pronghorn production survey for each pronghorn hunting unit.

Unit	Ratio			Actual Number		
	Bucks	Does	Fawns	Bucks	Does	Fawns
2	40	100	78	78	196	152
17	80	100	73	48	60	44
18	35	100	57	21	60	34
Total	47	100	73	147	316	230

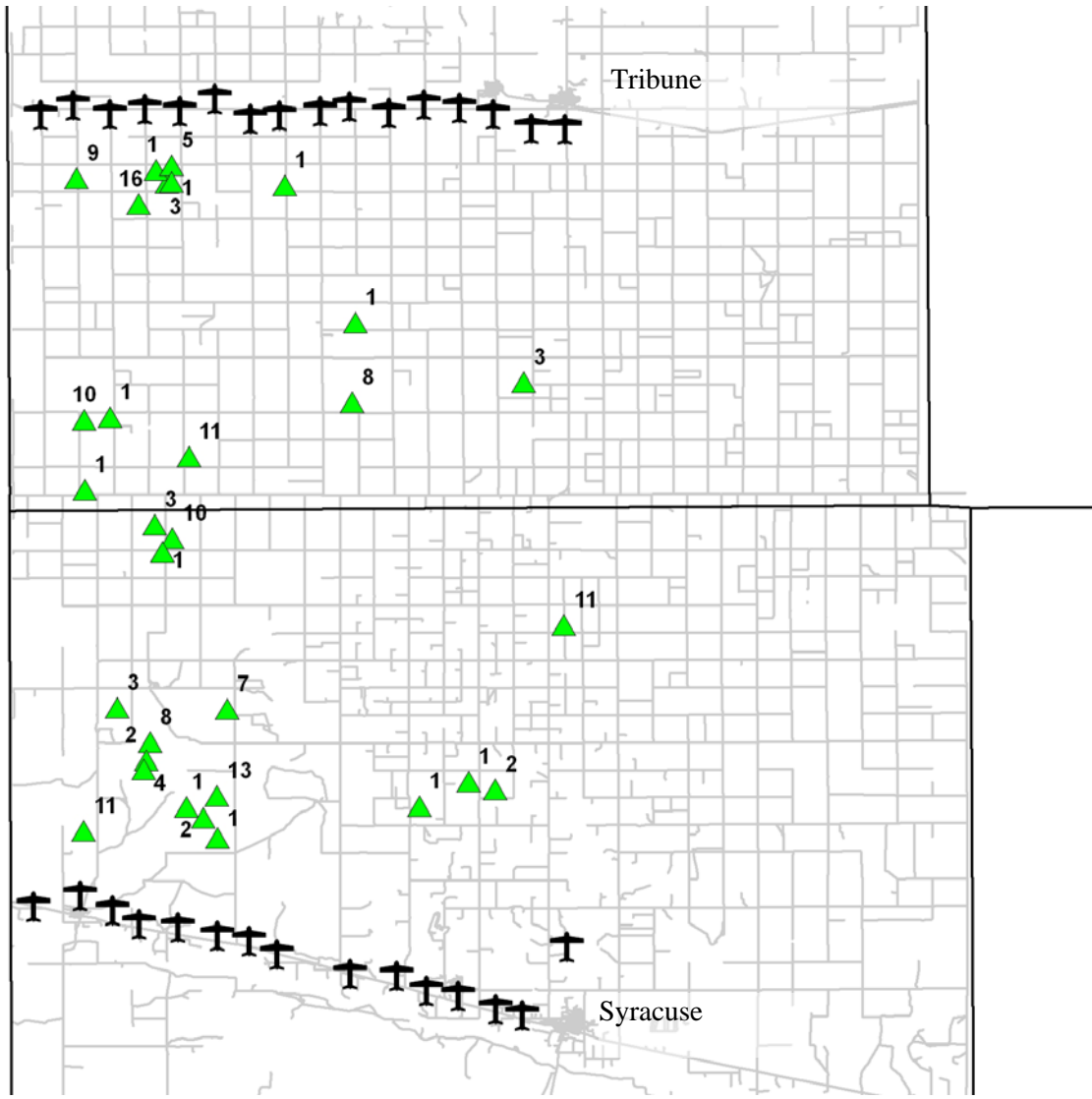
Table 2. Results of summer 2008 aerial pronghorn production survey for the Chase Co (Flint Hills) population.

Unit	Ratio			Actual Number		
	Bucks	Does	Fawns	Bucks	Does	Fawns
Chase Co	27	100	20	4	15	3



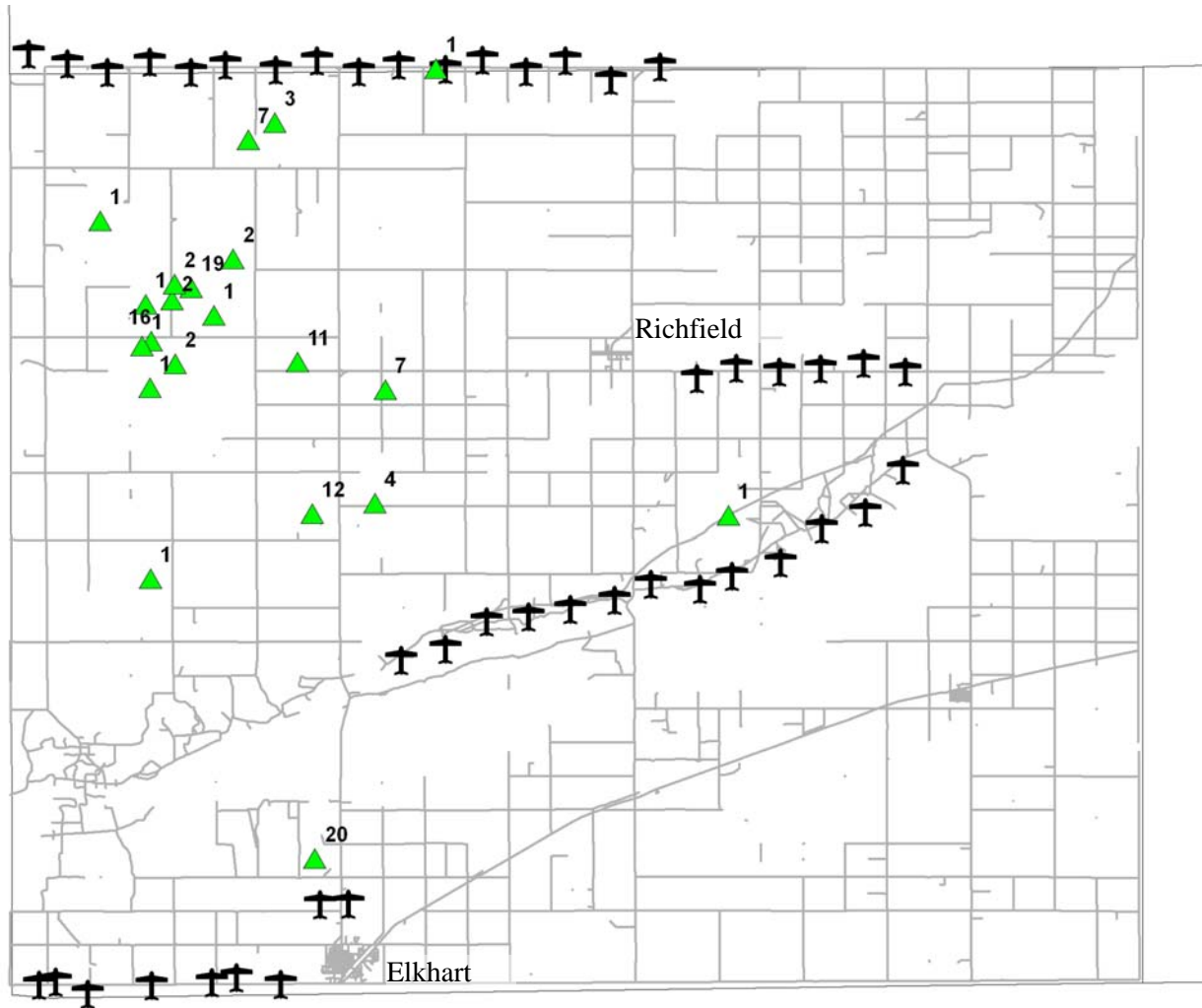
- ▲ Location and number of pronghorn observed
- ⊥ 2008 Summer Route

Figure 1. Unit 2 – Survey route and pronghorn observations (SH, WA, TH & LG Counties).



- ▲ Location and number of pronghorn observed
- † 2008 Summer Route

Figure 2. Unit 17 – Survey route and pronghorn observations (HM & GL Counties).



▲ Location and number of pronghorn observed

⊥ 2008 Summer Route

Figure 3. Unit 18 – Survey route and pronghorn observations (MT County).

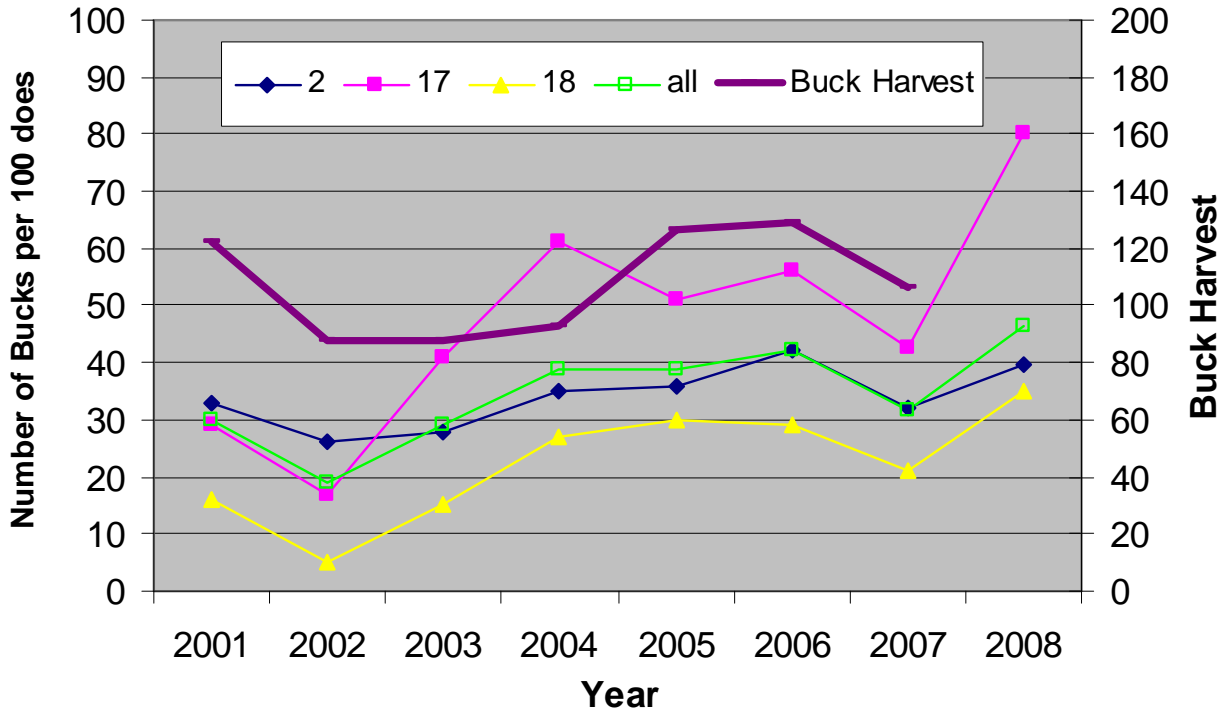


Figure 4. Number of pronghorn bucks per 100 does for each unit since 2001, and total annual buck harvest

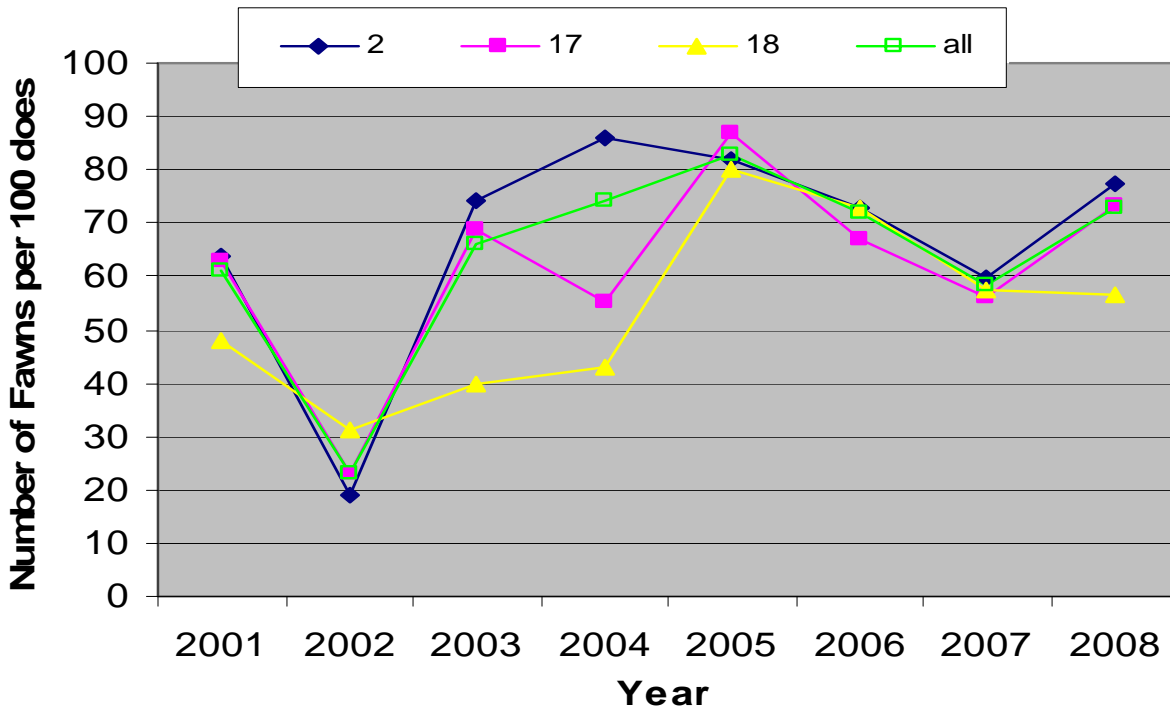


Figure 5. Number of pronghorn fawns per 100 does for each unit since 2001.