

QUESTIONS AND ANSWERS

Who is eligible?

Any landowner/operator with land established in CRP for at least 4 years. Land leased to private entities for hunting purposes does not qualify for this program.

Will this jeopardize my participation in the CRP program?

No. All practices are approved by USDA and state and local NRCS and FSA offices.

Does the land have to be enrolled in KDWP's Walk-In-Hunting Areas (WIHA) program?

No, but money is limited. Those enrolled in WIHA and the WIHA habitat program will have first priority for participation.

Now, where do I start?

1. Contact local KDWP wildlife biologists or regional office listed in this brochure, a Pheasants Forever or Quail Unlimited representative, or your county Natural Resources Conservation Service (NRCS) office.

2. The district wildlife biologist will meet with you, inspect the CRP fields and suggest the best habitat upgrades. You then decide which practices to apply, and the biologist will create a one-page habitat improvement plan which will also serve as a contract for payment.

3. Check with the county NRCS office to determine if your CRP contract must be modified, depending on the practices chosen.

4. Once the contract is modified, you may do the work yourself or a PF/QU custom operator will be found to do the work.

5. It can be as simple as saying yes. The wildlife biologist and the contractor can work out the details, obtain your signature and complete the work. You will receive either the incentive payment or both the incentive payment and the practice payment, if you do the work yourself.

WHAT ARE PAYMENT RATES?

| <u>Practices</u> | <u>Payments</u> ¹ |
|---|------------------------------|
| Prescribed Burning | \$8.00/acre |
| Strip disking (<i>no more than 15% of the field on CRP</i>) | \$16.50/acre |
| Strip disking with legume upgrade ² | \$27.50/acre |
| Food Plots (<i>annual; or perennial with legume; max. 5% of CRP "offered acres"</i>) | \$27.50/acre |
| No-till inter-seeding with legume (<i>max. 25% of field</i>) | \$11.00/acre |

¹ Payments will be made to CONTRACTORS, if landowners are unable to do the habitat work.

² KDWP will furnish an appropriate mix of legumes (primarily alfalfa) or food plot seed.

CONTACT FOR INFORMATION

Kansas Department of Wildlife & Parks KDWP
District Biologists:

Region 4 Office

6232 E 29th St. North
Wichita, KS 67220
(316) 683-8069

(HARVEY/SEDGWICK CO.)

Charles Cope, (316) 683-8069

(HARPER/SUMNER CO.)

Clint Bowman, (620) 326-2714

(KINGMAN/MARION/MCPHERSON/ RICE/RENO CO.)

Jeff Rue, (620) 728-1362

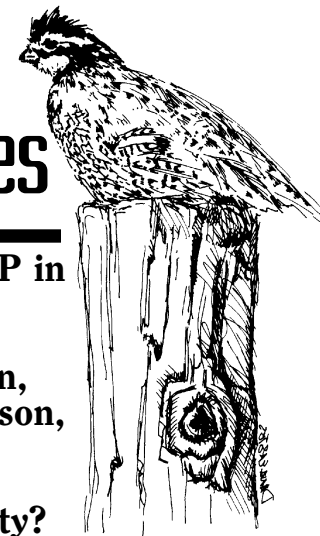
Steve Adams, (620) 663-3501

(BUTLER/CHASE/COWLEY/MORRIS CO.)

Brad Odle, (316) 322-7513

Equal opportunity to participate in and benefit from programs described herein is available to all individuals without regard to race, color, national origin, sex, religion, age or handicap. Complaints of discrimination should be sent to Office of the Secretary, Kansas Department of Wildlife and Parks, 900 Jackson St., Suite 502, Topeka, KS 66612. 01/06

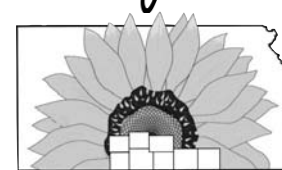
CRP Wildlife Habitat Upgrades



Do you have CRP in
Butler, Chase,
Cowley, Harper,
Harvey, Kingman,
Marion, McPherson,
Morris, Reno,
Rice, Sedgwick,
or Sumner county?

More birds on the land,
more \$ in your pocket

A Cooperative Program presented by
Kansas Department of Wildlife & Parks,
Pheasants Forever, Quail Unlimited
and Sunflower RC&D



Sunflower RC&D



Quail and pheasant populations in these counties remain lower than the long-term trends. Many factors may contribute to this, but quality habitat is the driving force for improving bird numbers.

Biologists from Kansas Department of Wildlife and Parks (KDWP), Pheasants Forever, and Quail Unlimited agree that Conservation Reserve Program (CRP) lands offer the best opportunity to improve habitat for upland game birds. These fields, although quite productive during the first few years of establishment, quickly become less and less inviting to birds for nesting and brood rearing as the tall, native grasses begin to dominate the stands. It has been shown that bird productivity drops off substantially after the field has been established for five years.

Landowner-cooperators in KDWP's Walk-In-Hunting Areas (WIHA) program who have not previously signed up in the habitat enhancement program, qualify for a signup bonus of \$200 plus \$1/acre of habitat work. WIHA cooperators who have had habitat work done in past years and new, non-WIHA landowners qualify for a signup bonus of \$50 plus \$1/acre of habitat work. (maximum of 40 acres of habitat work per non-WIHA cooperator).

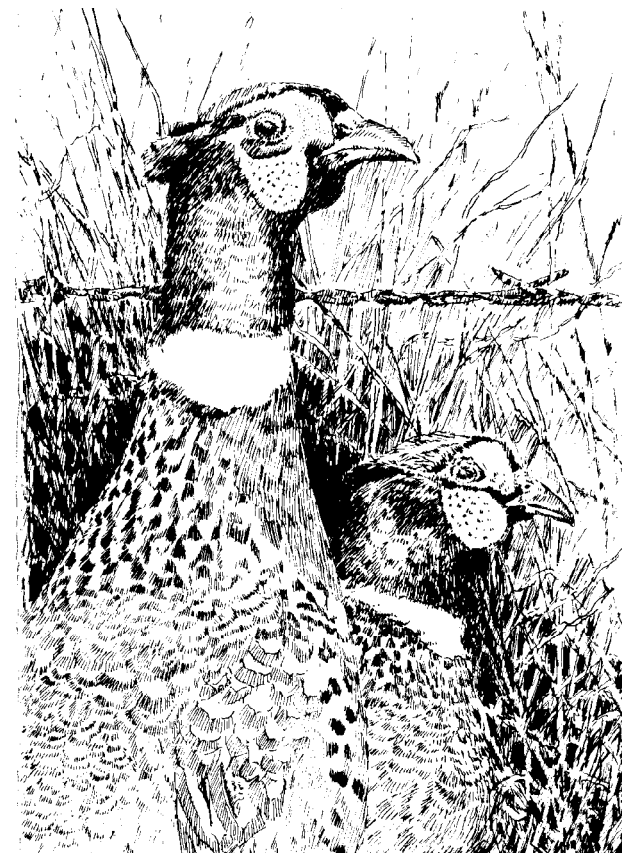
Following are a few easy management practices that can return CRP productivity for pheasants and quail.

STRIP DISKING

Strip disking is probably the simplest practice with the fastest results for increasing nesting and brood rearing. Strips are disked through the CRP, disturbing the surface and allowing annual plants a chance to establish. These might be wild sunflower, ragweed or similar plants used extensively by game birds. Grass in the strips is "set back" but not destroyed and in 2-3 years will be as thick as before.

BURNING

A prescribed burn removes old, grassy litter, improves travel lanes for young birds and increases annual and perennial forbs in the stand. It will also improve strip disking and inter-seeding success by allowing equipment to make better contact with the soil.



BROOD STRIPS

The benefits of strip disking can be magnified by drilling a legume mix over the disked strips. It has been shown that "brood strips" with alfalfa and other broad leaved plants are food factories for chicks.

FOOD PLOTS

Traditional food plots can also increase the value of CRP and can be planted with grain crops or legume mixes also. These may also serve as fire breaks to assist in burning CRP.

LEGUME INTERSEEDING

Finally, simple interseeding of a legume mix into burned, hayed or grazed CRP can help establish "brood strips" without disking.

