

# Council Grove Wildlife Area News



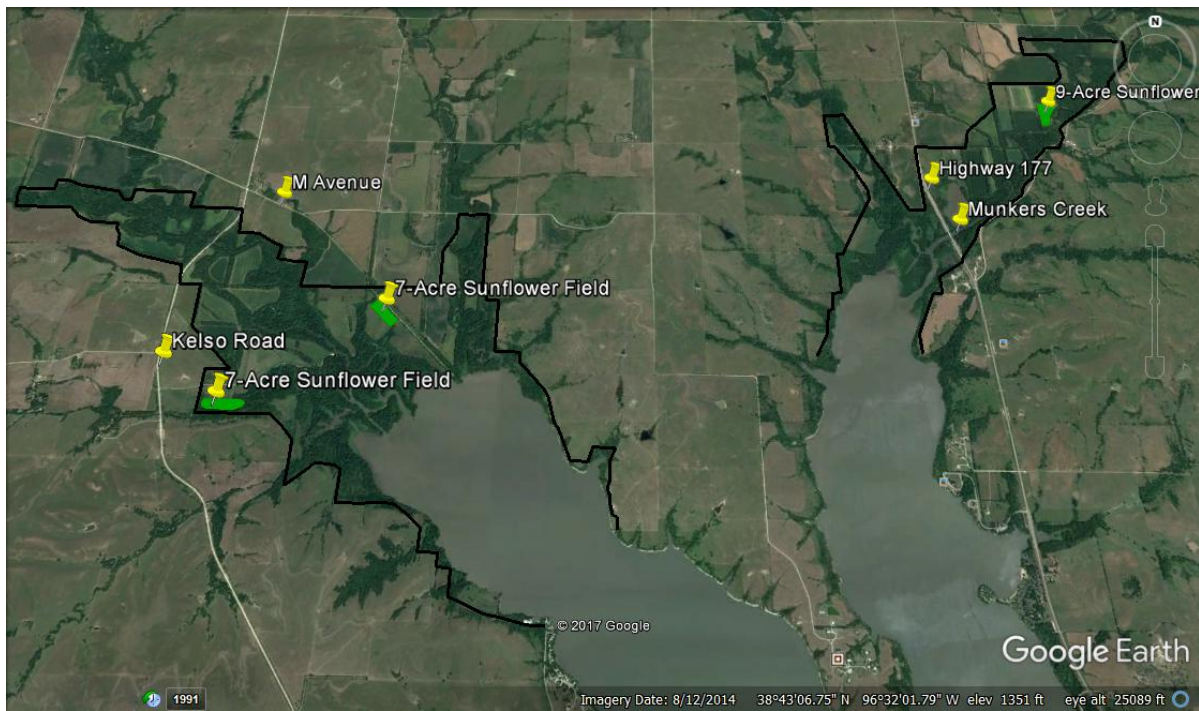
## Area News – Summer 2017

### 2017 Dove Hunting Outlook:

Three sunflower tracts (9, 7, 7 acres) should provide fair to good dove hunting opportunities at Council Grove Wildlife Area. Portions of each of these fields will be mowed (if conditions allow) to enhance dove use and hunter access. The 9-acre field can be found just east of the eastern most parking area along the north side of Munkers Creek. One 7-acre field (on north side of Neosho River) can be found just south of the western most parking area at the west end of M Avenue. The parking area can be reached by traveling about 0.35 miles east of the Kelso Church on M Avenue and taking the south fork in the road and continuing east about 0.7 miles. Another 7-acre field (on south side of Neosho River) is located south of the parking area and information kiosk near Gilmore Creek.

Dove hunters may be asked to obtain a permit prior to hunting and report harvest at the conclusion of their hunt. Please assist area staff with evaluating these opportunities by following instructions located at permit stations posted at each field. Hunters are also reminded to please be courteous and aware of other hunting parties while using these fields.

For a brochure and map of the entire wildlife area please visit the Council Grove Wildlife Area web page ([ksoutdoors.com](http://ksoutdoors.com)) and click on the brochure tab at the top of the page. For more information please call the area manager at #620/767-5900.



**Council Grove Wildlife Area – 2017 Managed Dove Hunting Locations**

Would you like more information about the Council Grove Wildlife Area?

Please contact:

Brent Konen – Area Manager  
Kansas Department of Wildlife, Parks & Tourism  
1130 Lake Road  
Council Grove, KS 66846  
#620/767-5900  
brent.konen@ks.gov  
[www.ksoutdoors.com](http://www.ksoutdoors.com)

