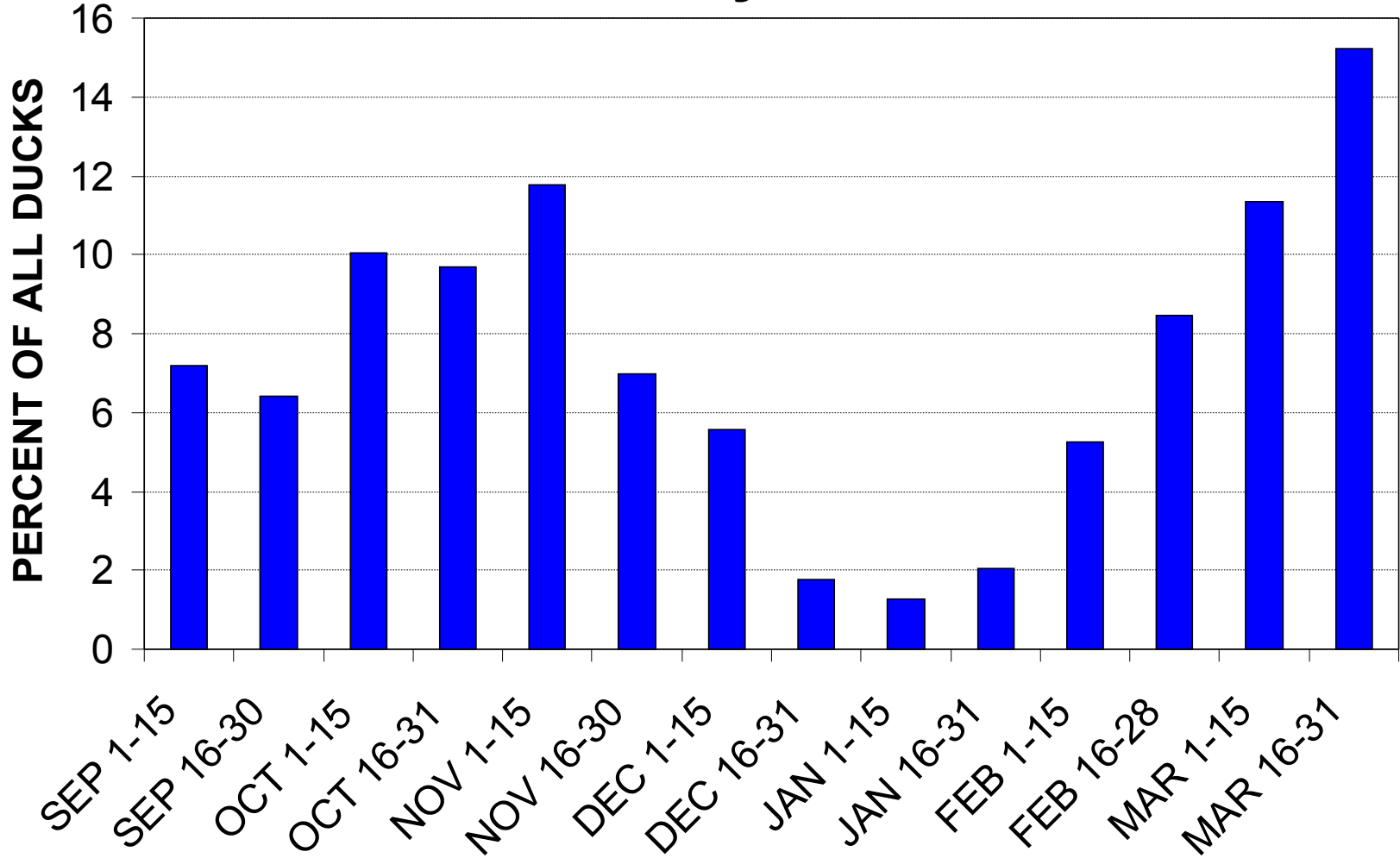
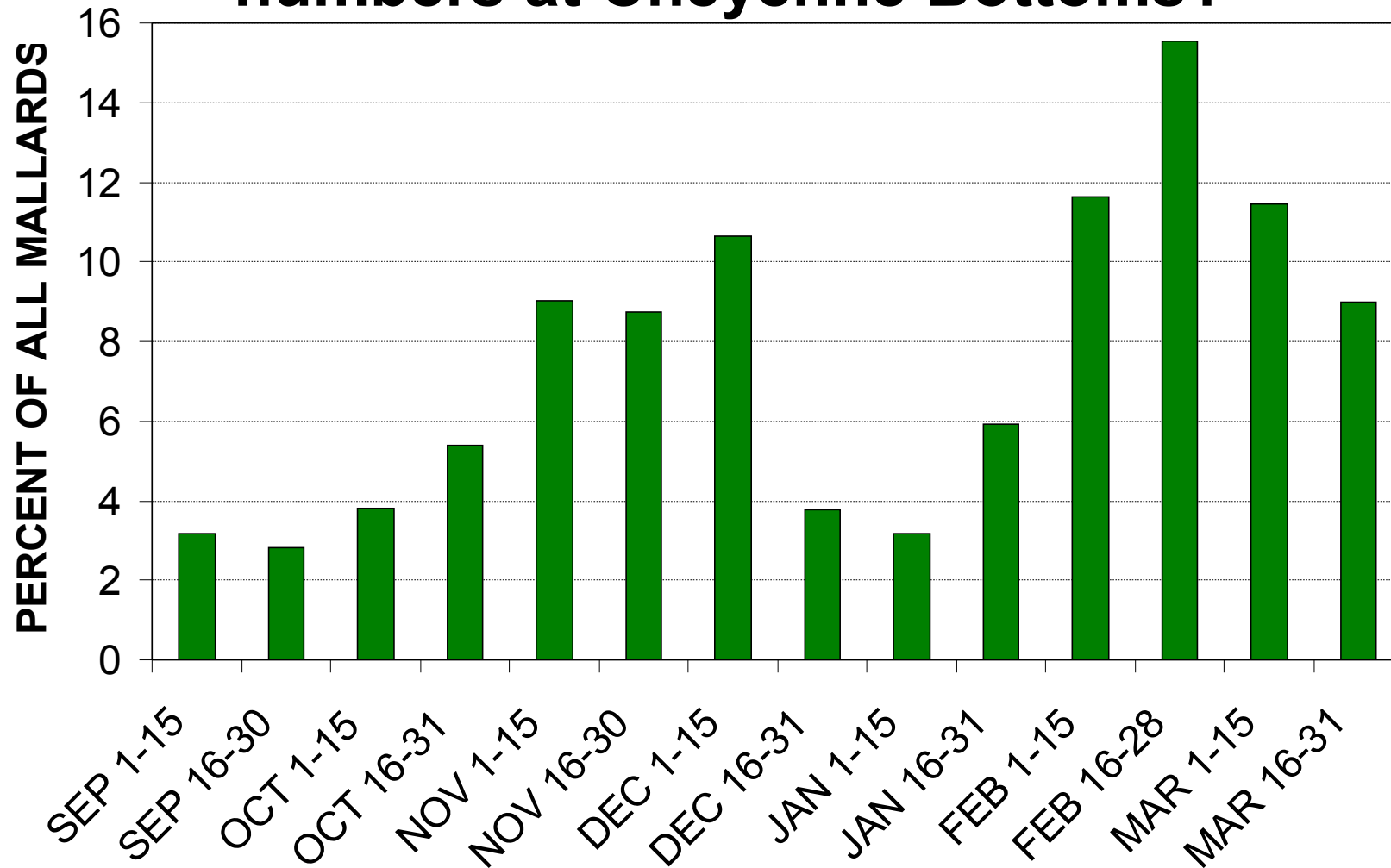


When do ducks typically reach peak numbers at Cheyenne Bottoms?



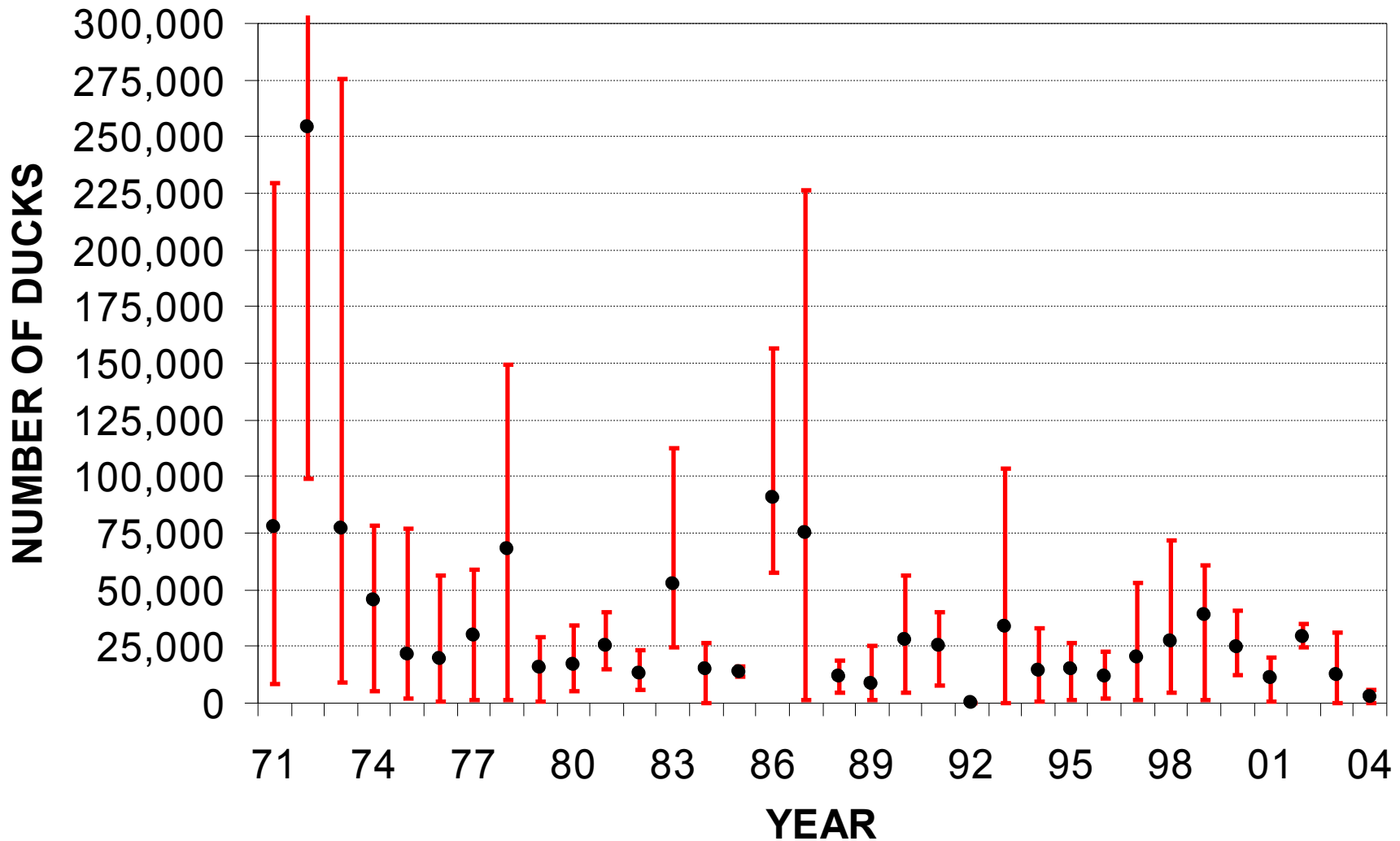
Average proportion of ducks occurring in each 2-week time period during September through March during the past 10 years. Ducks typically reach peak numbers during October and early November during the hunting season.

When do mallards typically reach peak numbers at Cheyenne Bottoms?



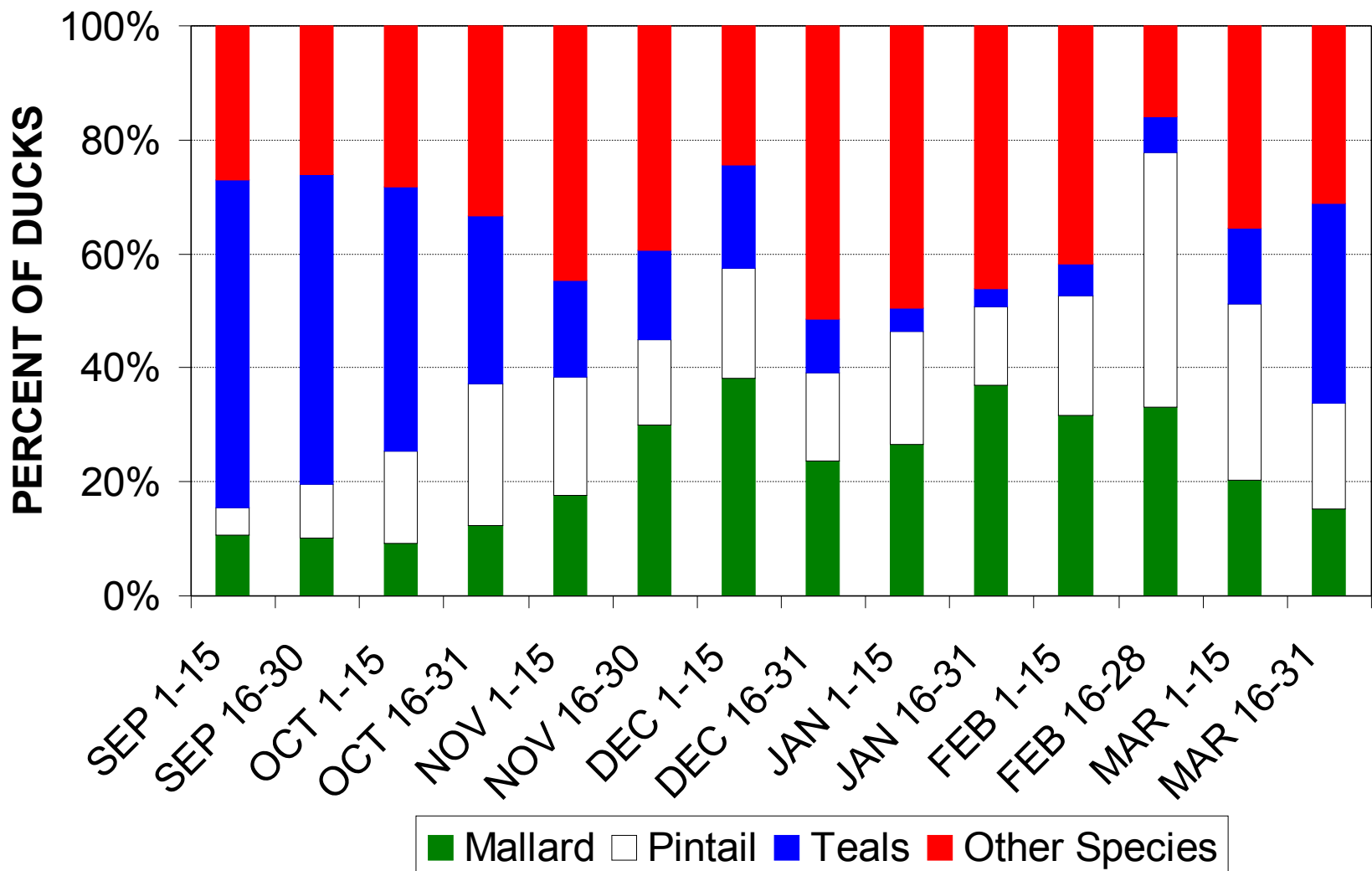
Average proportion of mallards occurring in each 2-week time period during September through March during the past 10 years. Mallards typically reach peak numbers during November and early December during the hunting season.

How many ducks are likely to be at Cheyenne Bottoms?



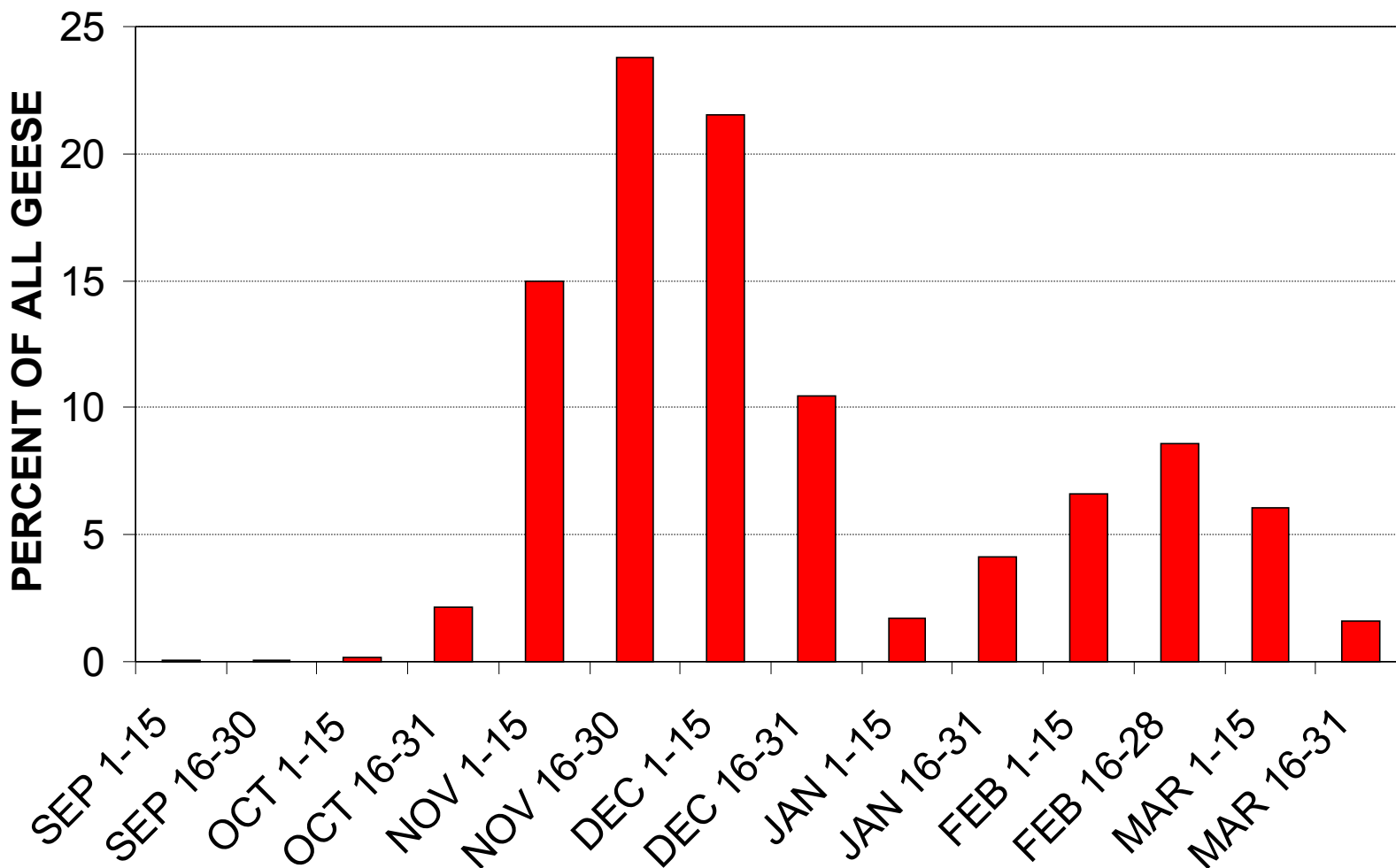
Variability in twice-monthly duck counts during the regular duck season. Black dots are the average counts and the red lines show the range in counts for each year (October 16-December 31). Overall, duck counts have ranged from 0 to 589,670.

How does duck species composition at Cheyenne Bottoms change over time?



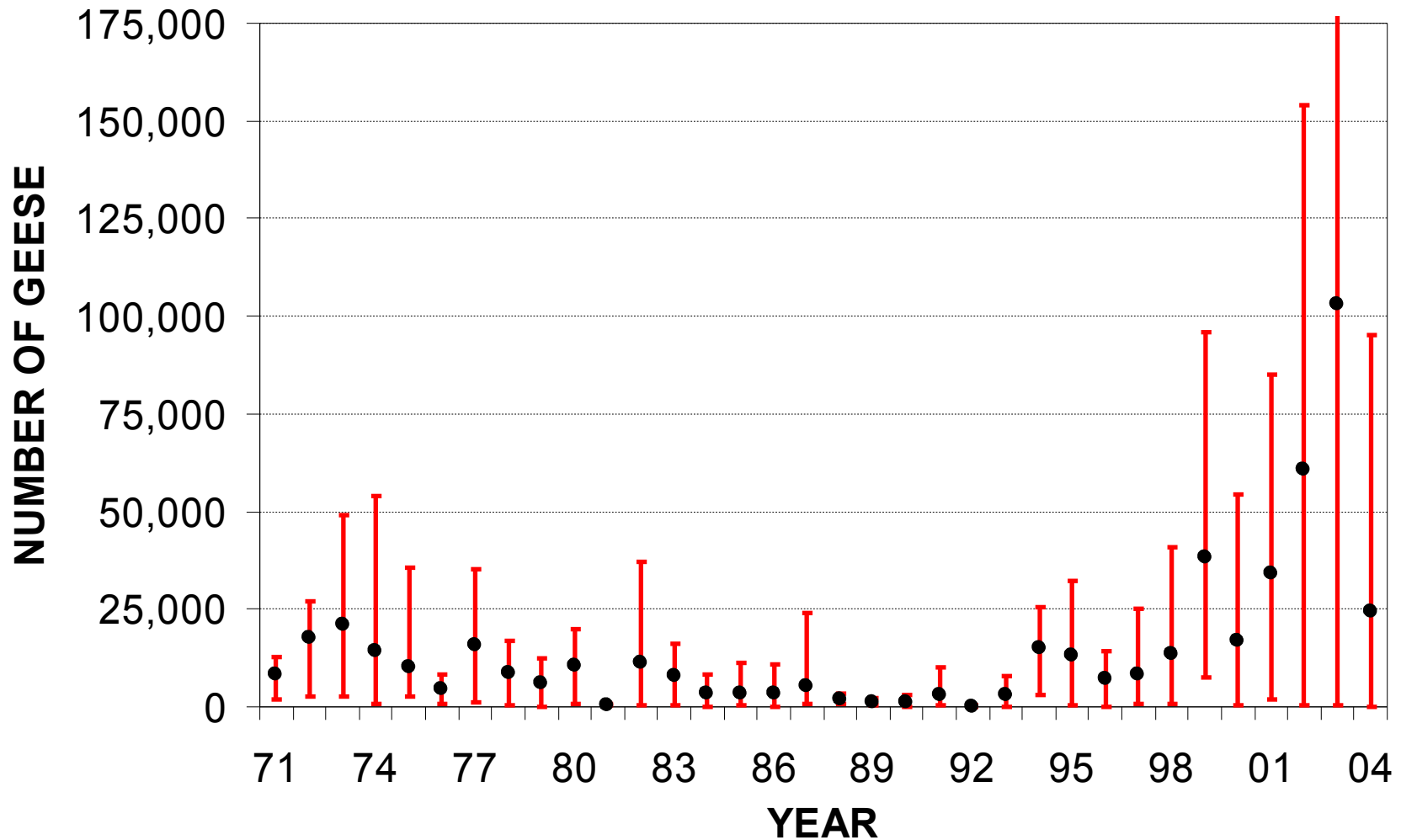
Mean species composition of ducks on twice-monthly waterfowl counts at Cheyenne Bottoms Wildlife Area during September 1995-March 2004. As a proportion of all ducks, teals were most common in September, pintails in late February, and mallards in late December.

When do geese typically reach peak numbers at Cheyenne Bottoms?



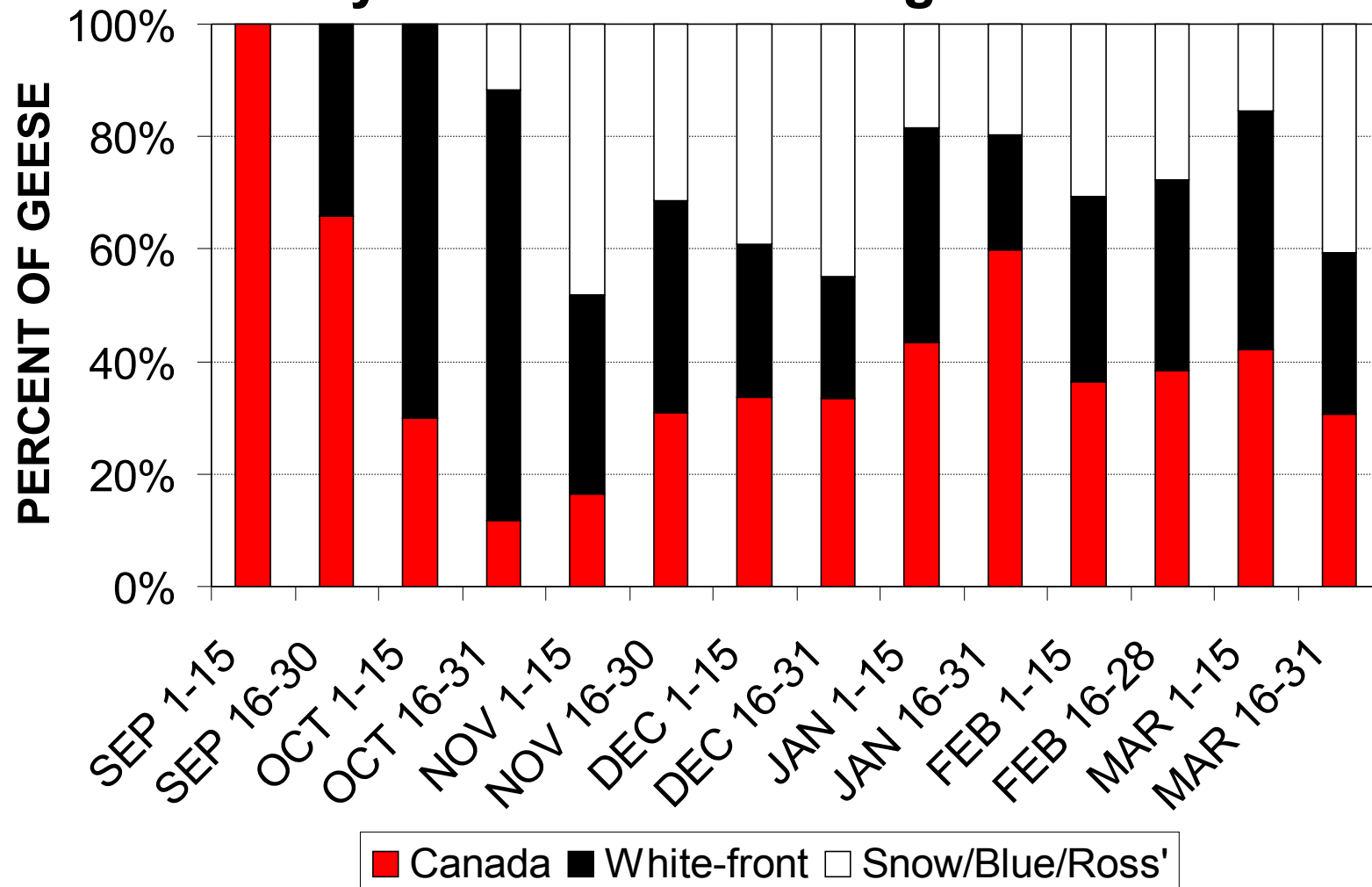
Average proportion of geese occurring in each 2-week time period during September through March during the past 10 years. Geese typically reach peak numbers during late November and early December.

How many geese are likely to be at Cheyenne Bottoms?



Variability in twice-monthly goose counts during the goose season. Black dots are the average counts and the red lines show the range in counts for each goose season (mid-October to mid-February). Overall, goose counts have ranged from 25 to 240,000.

How does goose species composition at Cheyenne Bottoms change over time?



Mean species composition of geese on twice-monthly waterfowl counts at Cheyenne Bottoms Wildlife Area during September 1995-March 2004. White-fronts are the most common goose species in October and snows in early November. Canadas reach their highest proportion, though not highest numbers, in early September.