

# **2005-06 BOBCAT PELT TAGGING REPORT**

PERFORMANCE REPORT  
STATEWIDE WILDLIFE RESEARCH AND SURVEYS

A Contribution of Pittman-Robertson Funds  
Federal Aid in Wildlife Restoration

Grant W-39-R-11

## **Kansas Department of Wildlife and Parks**

Mike Hayden  
Secretary

Prepared by

Matt Peek  
Furbearer Biologist

Joe Kramer, Director  
Fisheries and Wildlife  
Division

Mike Mitchener, Wildlife  
Section Chief



**May 2006**

## **PERMISSION TO QUOTE**

**This is an annual progress report that may contain information that is subject to future modification or revision. Persons wishing to quote from this report, for reproduction or reference, should first obtain permission from the Chief of the Wildlife Section, Kansas Department of Wildlife and Parks, 512 SE 25th Avenue, Pratt, KS 67124.**

## **EQUAL OPPORTUNITY STATEMENT**

**This program receives Federal financial assistance from the U.S. Fish and Wildlife Service. Under Title VI of the Civil Rights Act of 1964, Section 504 of the Rehabilitation Act of 1973, Title II of the Americans with Disabilities Act of 1990, the Age Discrimination Act of 1975, and Title IX of the Education Amendments of 1972, the U.S. Department of the Interior and its bureaus prohibit discrimination on the basis of race, color, national origin, age, disability or sex (in educational programs). If you believe that you have been discriminated against in any program, activity or facility, or if you desire further information, please write to:**

**The U.S. Fish and Wildlife Service  
Office of Diversity and Civil Rights Programs- External Programs  
4040 North Fairfax Drive, Suite 130  
Arlington, VA**

**22203**



## 2005-06 BOBCAT PELT TAGGING REPORT

Prepared by Matt Peek, Furbearer Biologist



An enumeration of bobcats taken in Kansas has been conducted annually since 1978. This project is accomplished with tags provided by the U.S. Fish and Wildlife Service, Office of Management Authority, under the CITES Export Tag Program. In 2005, Kansas was issued 6000 yellow "KS BCAT" tags. Also on hand were 270 yellow "KS BCAT" tags from the previous season and 700 white general replacement ("FWS REPL") tags from previous years. A total of 138 KDWP employees and offices were issued tags for the 2005-06 furharvesting season.

CITES tags were affixed to the pelts of 6021 bobcats that were taken in Kansas during the furharvesting season. This included 9 bobcats salvaged or confiscated by KDWP, and 9 bobcats taken for the Best Management Practices (BMP) trap research project. This was the highest harvest on record, surpassing the previous highest harvest of 5949 bobcats tagged in 2003-04 (**Figure 1**). The present harvest increase is primarily the result of a steadily increasing bobcat harvest in southwest and southcentral Kansas (**Figure 2**). In fact, this year's harvest in eastern Kansas (KDWP regions 2 and 5) declined by 525 bobcats from what it was just 2 seasons ago, but the decline was more than offset by harvest increases in the remainder of the state.

Bobcats were taken in 102 of 105 counties. The number of bobcats taken in each county is presented in **Figure 3**. The estimated number of bobcats taken each day of the season is presented in **Figure 4**. A noteworthy aspect of this figure is that harvest over the last 3 weeks of the season remained stable until the last few days when furharvesters were likely closing down their traplines. This is unusual, as harvest is expected to decline in response to a decreasing bobcat population. This consistent harvest is likely reflective of an increasing level of effort by furharvesters as the season progressed, which would offset the expected harvest decline. However, this may also indicate that the bobcat population is not being greatly impacted by the current level of harvest, at the statewide level anyway.

A total of 1440 furharvesters took bobcats during the season. Bobcats may be taken using equipment authorized in K.A.R. 115-5-1 or salvaged during the harvest season. **Table 1** provides a break down of the methods furharvesters used to take bobcats. **Table 2** indicates the primary species being pursued at the time the bobcat was taken. The number of furharvesters having various total season bags is given in **Table 3**.

After the initial tag allocation, tag accountability was maintained via reports from KDWP employees or offices issued tags. After the season, each was responsible for inventorying unused tags and accounting for all tags they were issued. Unused tags were then destroyed by each tagger or returned to the Emporia office. Bobcats harvested outside the furharvesting season ( $n = 7$ ) were not included in this analysis.

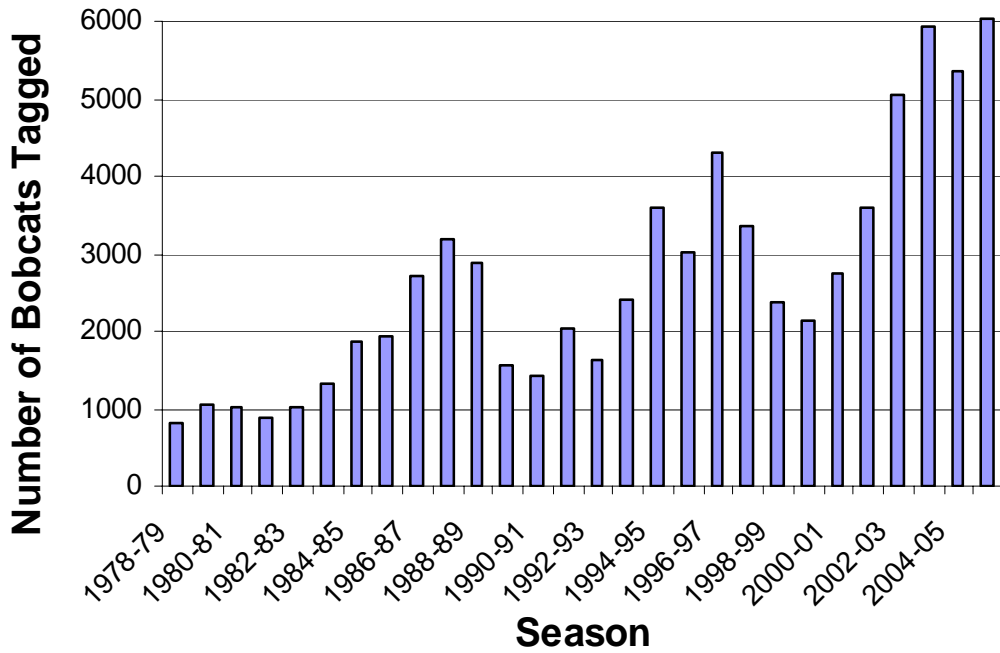


Figure 1. Number of bobcats pelt tagged annually since tagging began in 1978.

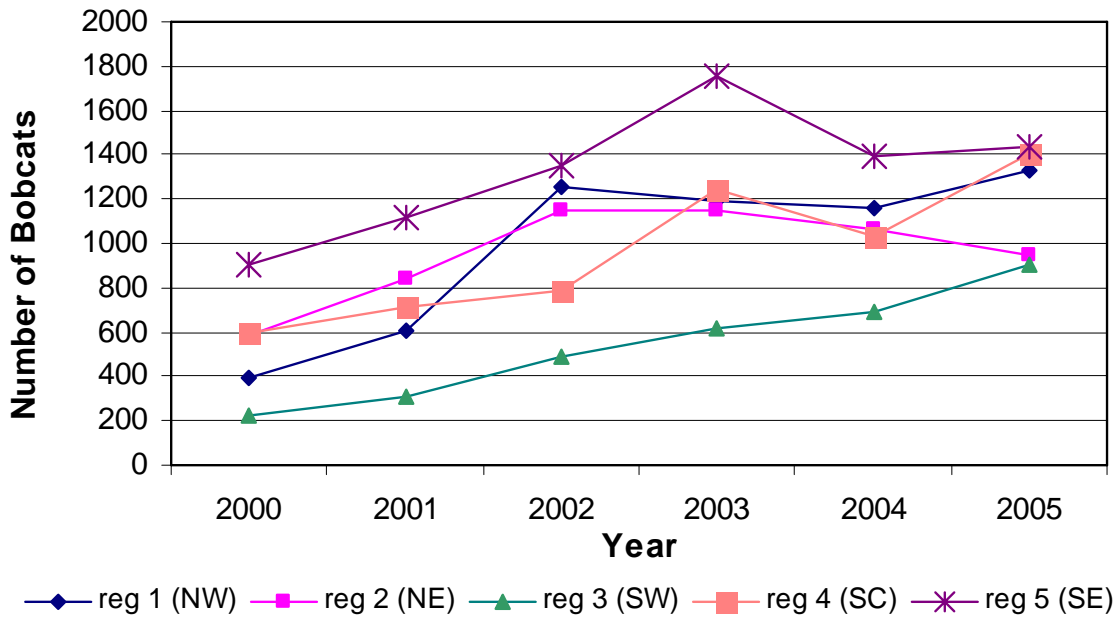


Figure 2. Number of bobcats harvested annually since 2000 in each of KDWP's 5 administrative regions.

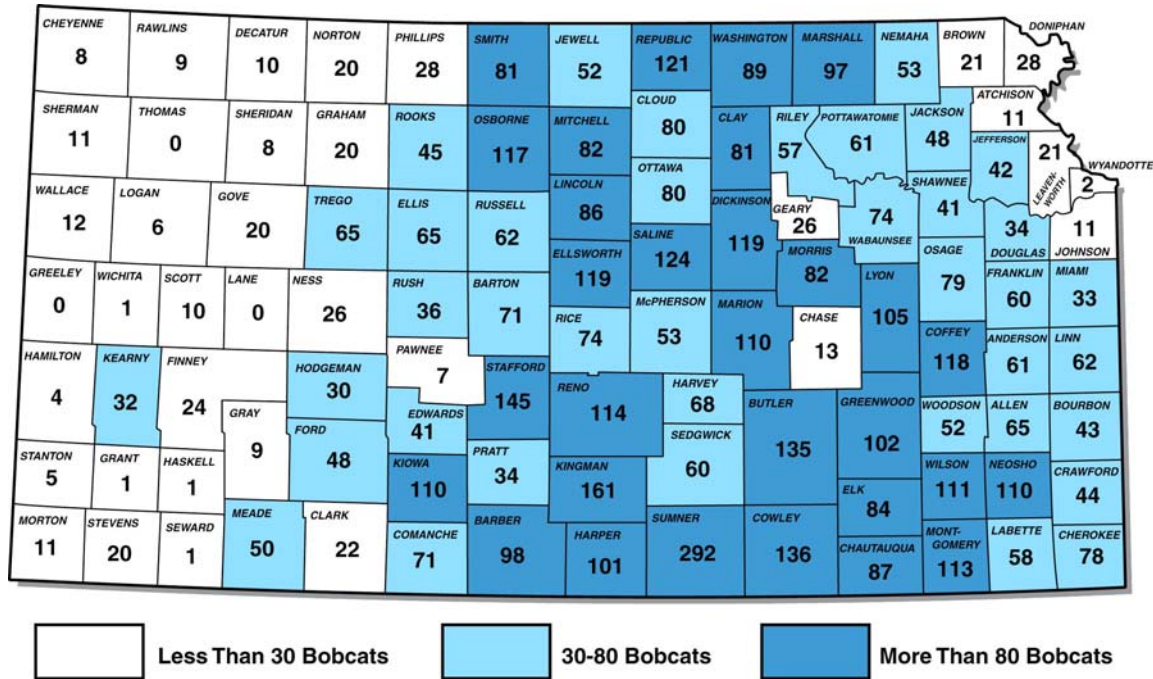


Figure 3. Number of bobcats taken per county during the 2005-06 furharvesting season in Kansas (n = 6019).

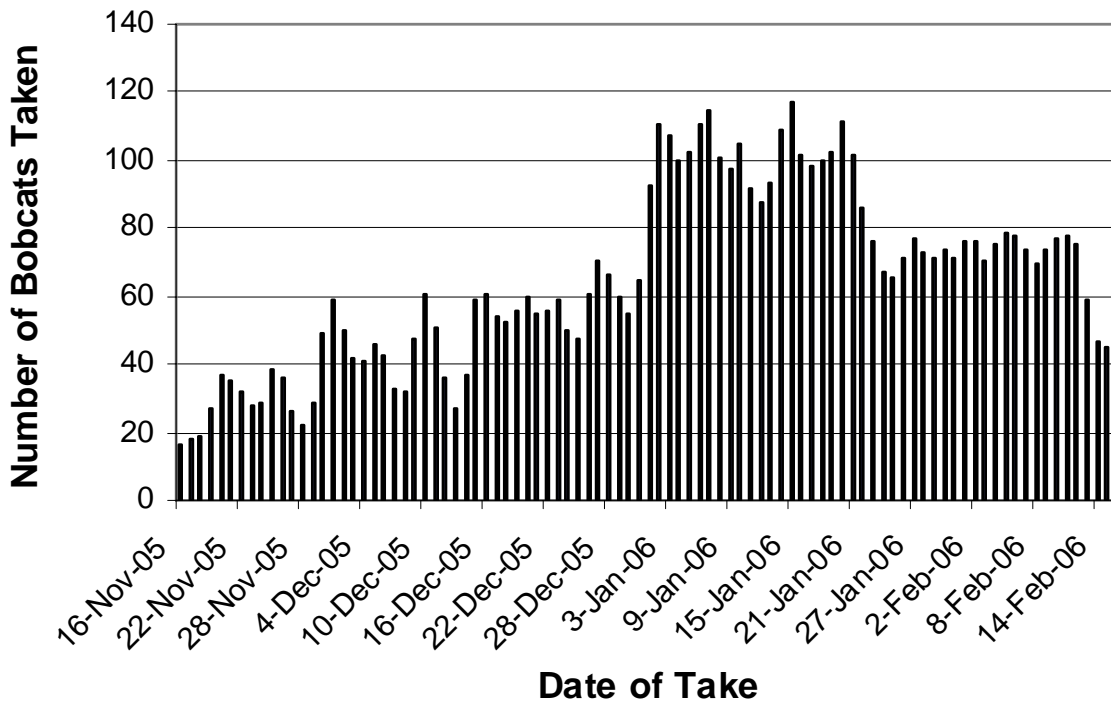


Figure 4. Estimated number of bobcats taken per day during the 2005-06 furharvesting season. (Data smoothed:  $y_{(i)} = .5y_{(i)} + .25y_{(i+1)} + .25y_{(i-1)}$ .)

Table 1. Methods used to take bobcats during the 2005-06 furharvesting season in Kansas.

METHOD	Number of Furharvesters*	Number of Bobcats taken	Percent of Bobcats taken
TRAPPING			
(1) Foothold Trap	560	2696	44.8%
(2) Conibear Trap	142	353	5.9%
(3) Cage Trap	244	852	14.2%
(4) Snare	231	795	13.2%
SUB-TOTAL	1177	4696	78.0%
HUNTING			
(5) Rifle	511	843	14.0%
(6) Shotgun	124	162	2.7%
(7) Archery	60	65	1.1%
(8) Hounds	26	50	0.8%
Unspec. Hunt	4	8	0.1%
SUB-TOTAL	725	1128	18.7%
OTHER			
(9) Salvage	166	188	3.1%
(10) Unspecified	9	9	0.1%
SUB-TOTAL	175	197	3.3%
TOTAL	2077	6021	100.0%

\* Furharvesters who took bobcats by more than one method are represented multiple times.

Table 2. Primary species being pursued when bobcats were taken during the 2005-06 furharvesting season in Kansas.

SPECIES	FREQUENCY	PERCENT
FURBEARERS		
Bobcat	5080	84.4%
Coyote	371	6.2%
Raccoon	143	2.4%
Fox	7	0.1%
Other	6	0.1%
SUB-TOTAL	5607	93.1%
BIG GAME		
Deer	137	2.3%
SMALL GAME		
Quail	16	0.3%
Pheasant	44	0.7%
Rabbit	6	0.1%
Other	5	0.1%
SUB-TOTAL	71	1.2%
OTHERS		
Unspecified	18	0.3%
Salvage	188	3.1%
SUB-TOTAL	206	3.4%
TOTAL	6021	100.0%

Table 3. Total season bag of bobcats per furharvester during the 2005-06 season.  
 Data includes 9 bobcats taken by KDWP and 9 bobcats taken for BMP research.

Total Season Bag	Number of Furharvesters	Percent of Furharvesters	Cumulative Percent of Furharvesters	Total number of Bobcats Taken	Percent of Bobcats Taken	Cumulative Percent of Bobcats Taken
1	585	40.63%	40.63%	585	9.72%	9.72%
2	245	17.01%	57.64%	490	8.14%	17.85%
3	152	10.56%	68.19%	456	7.57%	25.43%
4	101	7.01%	75.21%	404	6.71%	32.14%
5	65	4.51%	79.72%	325	5.40%	37.54%
6	44	3.06%	82.78%	264	4.38%	41.92%
7	41	2.85%	85.63%	287	4.77%	46.69%
8	30	2.08%	87.71%	240	3.99%	50.67%
9	25	1.74%	89.44%	225	3.74%	54.41%
10	23	1.60%	91.04%	230	3.82%	58.23%
11	24	1.67%	92.71%	264	4.38%	62.61%
12	12	0.83%	93.54%	144	2.39%	65.01%
13	11	0.76%	94.31%	143	2.38%	67.38%
14	9	0.63%	94.93%	126	2.09%	69.47%
15	5	0.35%	95.28%	75	1.25%	70.72%
16	7	0.49%	95.76%	112	1.86%	72.58%
17	9	0.63%	96.39%	153	2.54%	75.12%
18	5	0.35%	96.74%	90	1.49%	76.62%
19	5	0.35%	97.08%	95	1.58%	78.19%
20	5	0.35%	97.43%	100	1.66%	79.85%
21	3	0.21%	97.64%	63	1.05%	80.90%
22	3	0.21%	97.85%	66	1.10%	82.00%
23	4	0.28%	98.13%	92	1.53%	83.52%
24	2	0.14%	98.26%	48	0.80%	84.32%
25	1	0.07%	98.33%	25	0.42%	84.74%
26	6	0.42%	98.75%	156	2.59%	87.33%
28	1	0.07%	98.82%	28	0.47%	87.79%
30	1	0.07%	98.89%	30	0.50%	88.29%
31	2	0.14%	99.03%	62	1.03%	89.32%
32	1	0.07%	99.10%	32	0.53%	89.85%
33	1	0.07%	99.17%	33	0.55%	90.40%
34	1	0.07%	99.24%	34	0.56%	90.96%
38	1	0.07%	99.31%	38	0.63%	91.60%
39	1	0.07%	99.38%	39	0.65%	92.24%
40	1	0.07%	99.44%	40	0.66%	92.91%
41	2	0.14%	99.58%	82	1.36%	94.27%
42	1	0.07%	99.65%	42	0.70%	94.97%
44	1	0.07%	99.72%	44	0.73%	95.70%
49	1	0.07%	99.79%	49	0.81%	96.51%
50	1	0.07%	99.86%	50	0.83%	97.34%
61	1	0.07%	99.93%	61	1.01%	98.36%
99	1	0.07%	100.00%	99	1.64%	100.00%

Total

1440

6021