

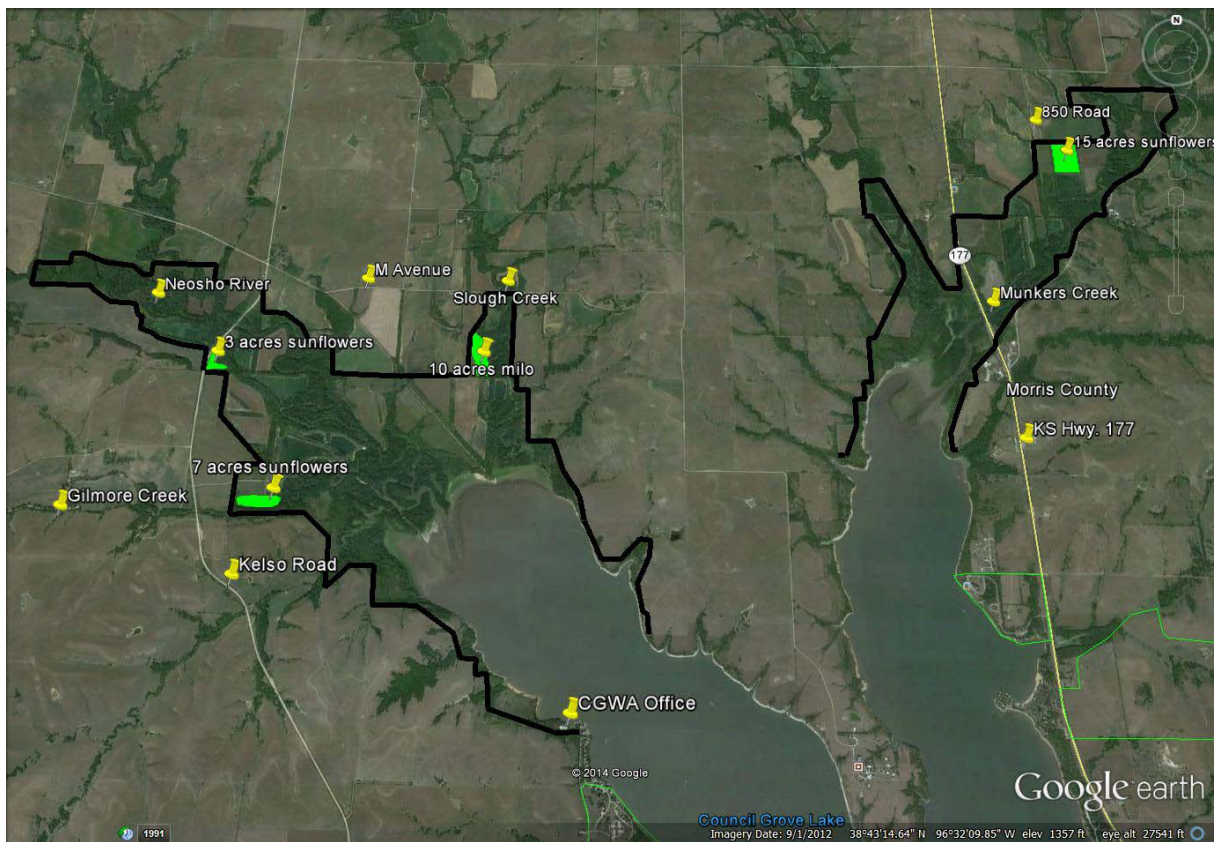
Council Grove Wildlife Area News



Area News – Summer 2014

2014 Dove Hunting Outlook:

Three sunflower tracts (3, 7, 15 acres) and one milo tract (10 acres) should provide fair to good dove hunting opportunities at Council Grove Wildlife Area. Portions of each of these fields will be mowed (if conditions allow) to enhance dove use and hunter access. The 3 acre sunflower tract is located approximately 200 yards south of the Neosho River bridge and east of Kelso Road. The 7 acre sunflower field is located south of the parking area and information kiosk near Gilmore Creek. The 15 acre sunflower tract is located approximately 200 yards east of the parking area at the south end of 850 Road, or, 300 yards north of the eastern most parking area along the north side of Munkers Creek. The 10 acre milo field is located about 0.25 miles south of the parking area and information kiosk west of Slough Creek on M Avenue. Dove hunters may be asked to obtain a permit prior to hunting and to report harvest at the conclusion of their hunt. Please assist area staff with evaluating these opportunities by following instructions located at permit stations posted at each field. Hunters are also reminded to please be courteous and aware of other hunting parties while using these fields! For a brochure and map of the entire wildlife area please visit the Council Grove Wildlife Area web page (ksoutdoors.com) and click on the brochure tab at the top of the page. For more information please call area manager, Brent Konen, at #620/767-5900.



Council Grove Wildlife Area – 2014 Managed Dove Hunting Locations

Would you like more information about the Council Grove Wildlife Area?

Please contact:

Brent Konen – Area Manager
Kansas Department of Wildlife, Parks & Tourism
1130 Lake Road
Council Grove, KS 66846
#620/767-5900
brent.konen@ksoutdoors.com
www.ksoutdoors.com

